

1 Rushmere Avenue

SUBMITTED BY

Ian H

CREATED ON

2024-10-23

LOCATION

1 Rushmere Avenue
RM14 3AW Upminster
England
GB



Total area
2109.25 sq ft

Floors
2



GRIFFIN
THE PROPERTY PEOPLE

1 Rushmere Avenue

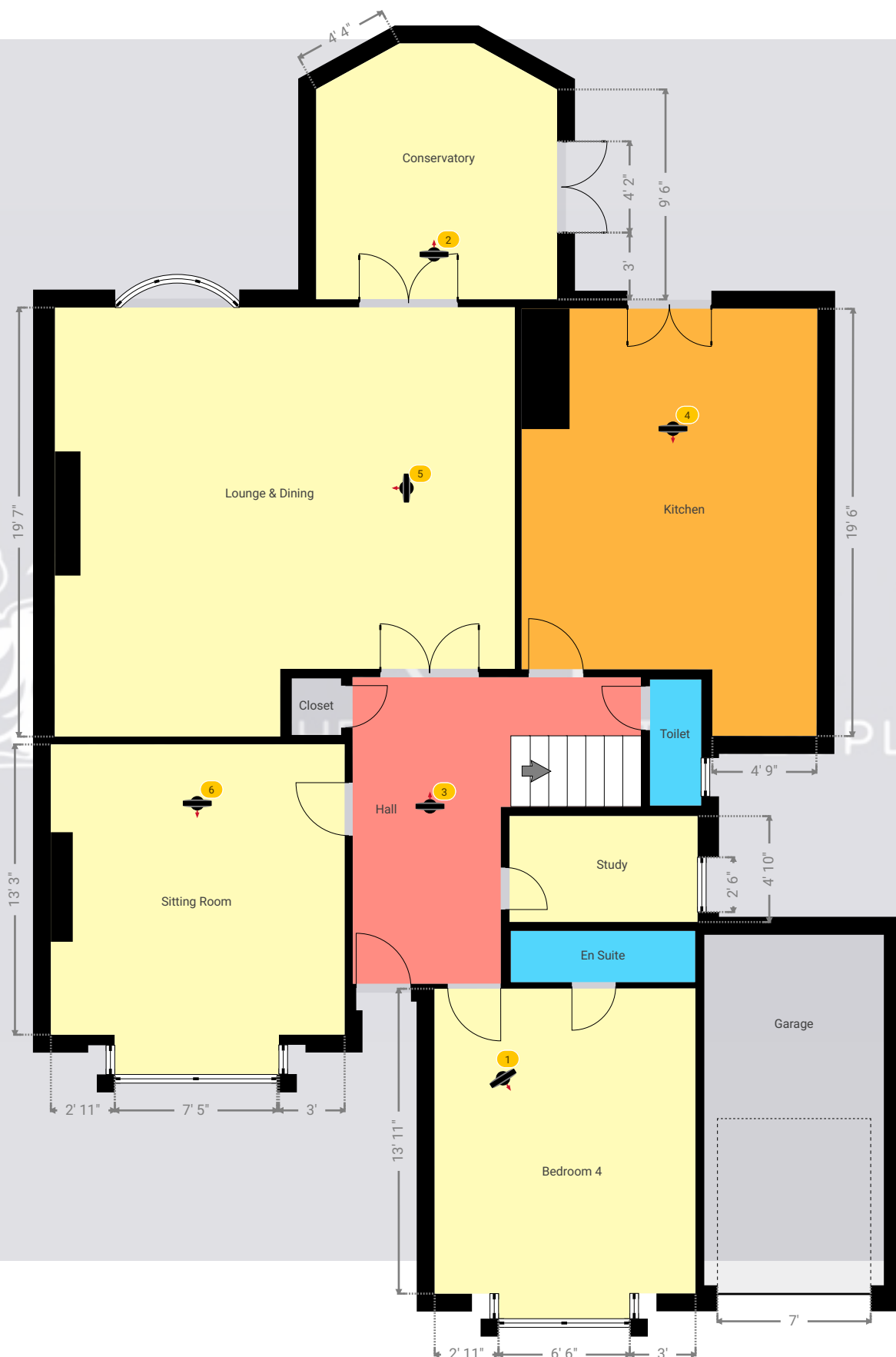
1 Rushmere Avenue, RM14 3AW Upminster, England, GB

TOTAL AREA: 2109.25 sq ft • LIVING AREA: 1978.05 sq ft • FLOORS: 2



▼ Ground Floor

TOTAL AREA: 1442.61 sq ft • LIVING AREA: 1311.41 sq ft •



The Griffin Property Group take no responsibility for any error, omission, misstatement or use of data shown. This plan is for illustrative purposes only and whilst every attempt has been made to ensure the accuracy of the floorplan shown, all measurements, positioning, fixtures, fittings and any other data shown are an approximate interpretation for illustrative purposes only. These plans are the property of The Griffin Property Group and must not be reproduced in any form without our permission.

0' 4' 8' 12'

1:81

Page 2/29

1 Rushmere Avenue

1 Rushmere Avenue, RM14 3AW Upminster, England, GB

TOTAL AREA: 2109.25 sq ft • LIVING AREA: 1978.05 sq ft • FLOORS: 2



▼ Ground Floor

Photos

3 Photos (see photos page)



GRIFFIN
THE PROPERTY PEOPLE

1 Rushmere Avenue

1 Rushmere Avenue, RM14 3AW Upminster, England, GB

TOTAL AREA: 2109.25 sq ft • LIVING AREA: 1978.05 sq ft • FLOORS: 2



▼ Photos/Ground Floor



IFFIN
THE PROPERTY PEOPLE

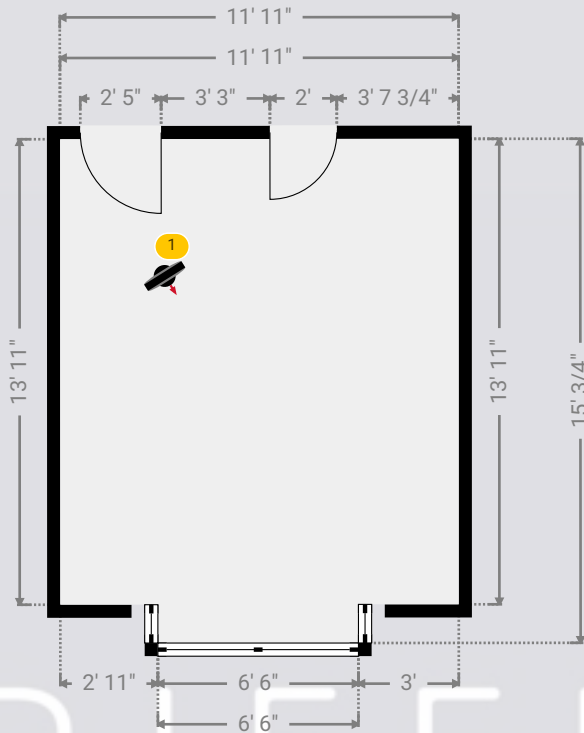
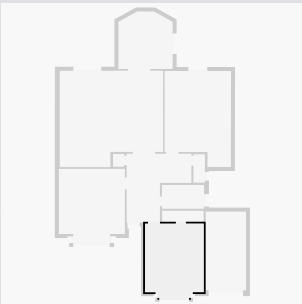
1 Rushmere Avenue

1 Rushmere Avenue, RM14 3AW Upminster, England, GB
TOTAL AREA: 2109.25 sq ft • LIVING AREA: 1978.05 sq ft • FLOORS: 2



▼ Bedroom 4 Ground Floor

WIDTH: 11' 11" • LENGTH: 15' 3/4"
AREA: 172.72 sq ft • PERIMETER: 53' 11 1/2"



▼ Bedroom 4/Ground Floor

Photos
2 Photos (see photos page)

1 360 PANORAMA

Photo
1 Photo (see photos page)

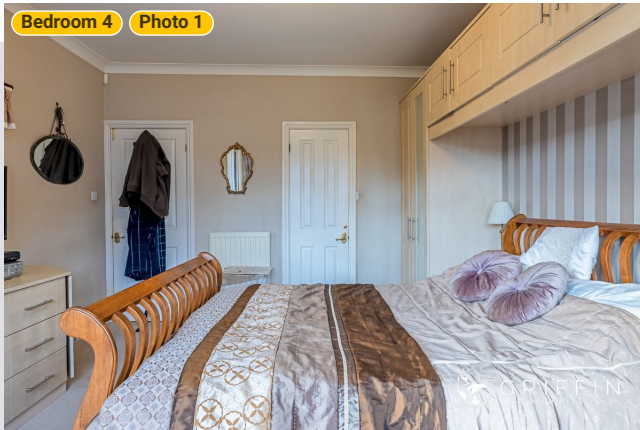


1 Rushmere Avenue

1 Rushmere Avenue, RM14 3AW Upminster, England, GB
TOTAL AREA: 2109.25 sq ft • LIVING AREA: 1978.05 sq ft • FLOORS: 2



▼ Photos/Bedroom 4



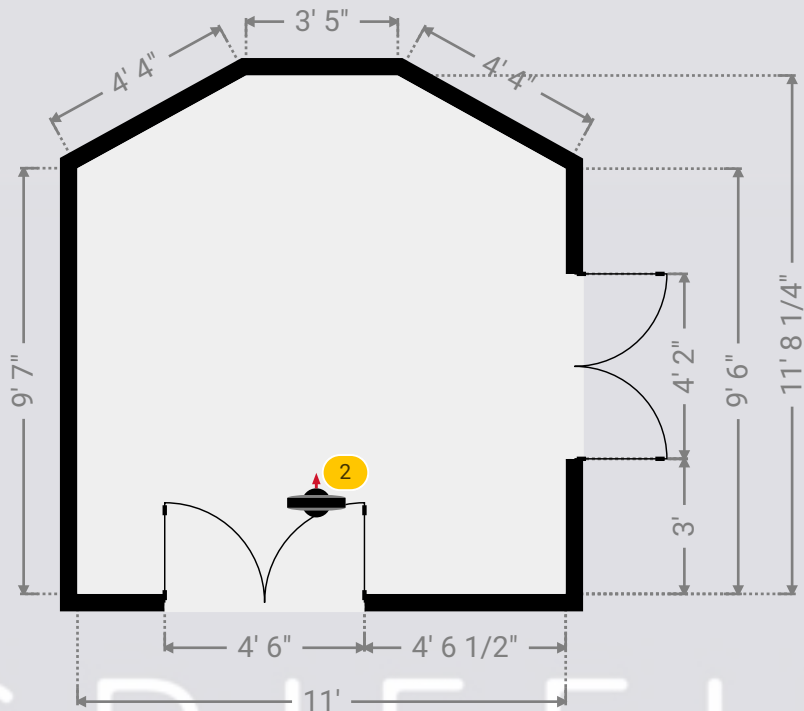
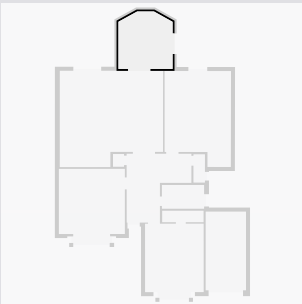
1 Rushmere Avenue

1 Rushmere Avenue, RM14 3AW Upminster, England, GB
TOTAL AREA: 2109.25 sq ft • LIVING AREA: 1978.05 sq ft • FLOORS: 2



▼ Conservatory Ground Floor

WIDTH: 11' • LENGTH: 11' 8 1/4"
AREA: 120.54 sq ft • PERIMETER: 42' 3"



▼ Conservatory /Ground Floor

Photo

1 Photo (see photos page)

2 360 PANORAMA

Photo

1 Photo (see photos page)



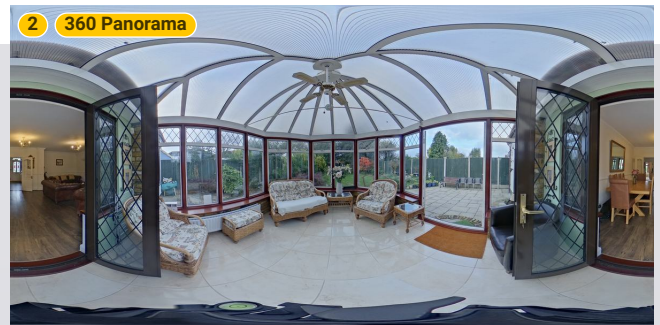
1 Rushmere Avenue

1 Rushmere Avenue, RM14 3AW Upminster, England, GB

TOTAL AREA: 2109.25 sq ft • LIVING AREA: 1978.05 sq ft • FLOORS: 2



▼ Photos/Conservatory



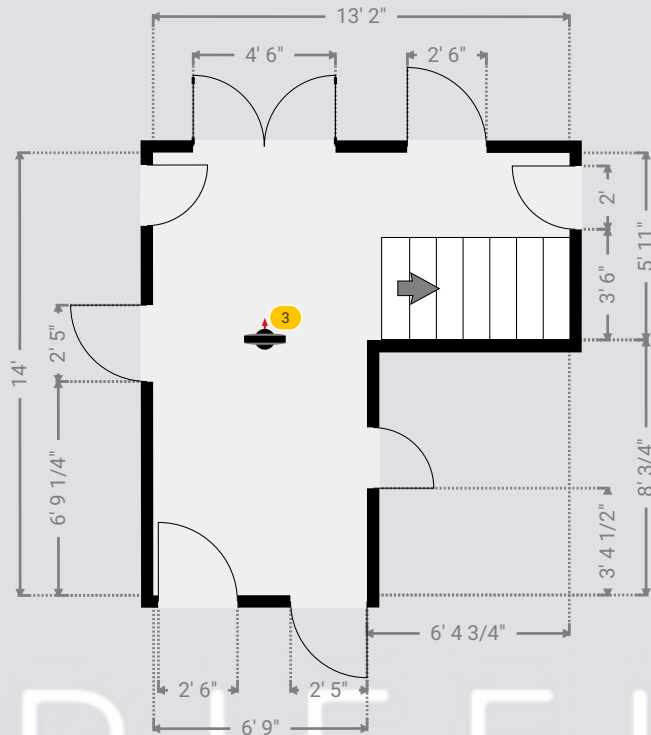
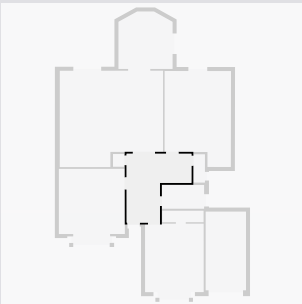
1 Rushmere Avenue

1 Rushmere Avenue, RM14 3AW Upminster, England, GB
TOTAL AREA: 2109.25 sq ft • LIVING AREA: 1978.05 sq ft • FLOORS: 2



▼ Hall Ground Floor

WIDTH: 13' 2" • LENGTH: 14'
AREA: 132.45 sq ft • PERIMETER: 54' 3 3/4"



▼ Hall/Ground Floor

Photos
2 Photos (see photos page)

3 360 PANORAMA

Photo
1 Photo (see photos page)



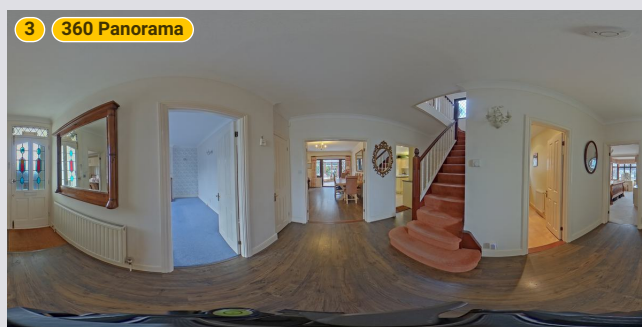
1 Rushmere Avenue

1 Rushmere Avenue, RM14 3AW Upminster, England, GB

TOTAL AREA: 2109.25 sq ft • LIVING AREA: 1978.05 sq ft • FLOORS: 2



▼ Photos/Hall



GRIFFIN
THE PROPERTY PEOPLE

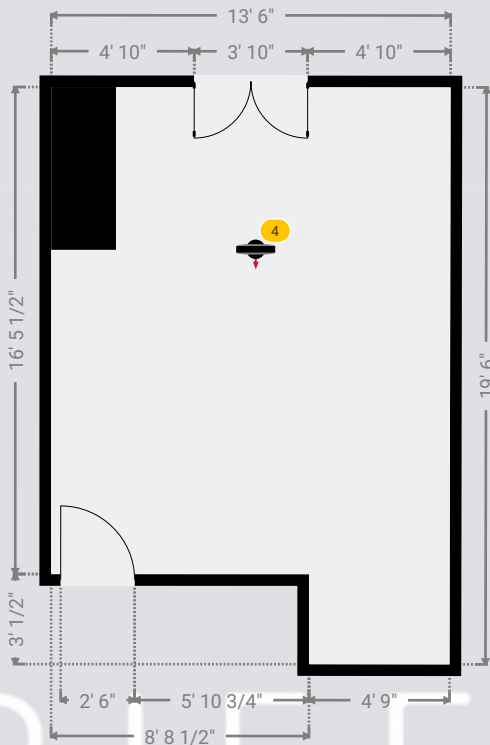
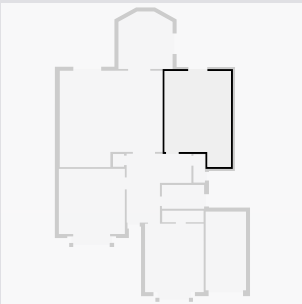
1 Rushmere Avenue

1 Rushmere Avenue, RM14 3AW Upminster, England, GB
TOTAL AREA: 2109.25 sq ft • LIVING AREA: 1978.05 sq ft • FLOORS: 2



▼ Kitchen Ground Floor

WIDTH: 13' 6" • LENGTH: 19' 6"
AREA: 236.39 sq ft • PERIMETER: 65' 11 1/2"



▼ Kitchen/Ground Floor

Photos
4 Photos (see photos page)

4 360 PANORAMA
Photo
1 Photo (see photos page)

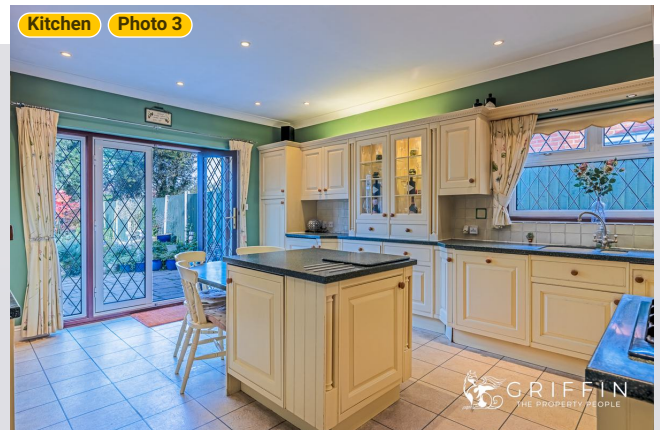
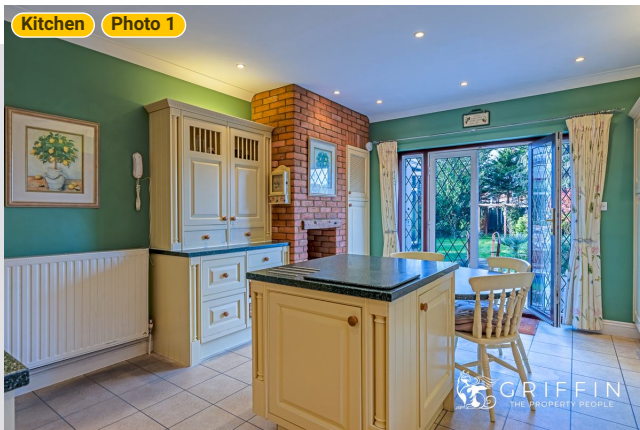


1 Rushmere Avenue

1 Rushmere Avenue, RM14 3AW Upminster, England, GB
TOTAL AREA: 2109.25 sq ft • LIVING AREA: 1978.05 sq ft • FLOORS: 2



▼ Photos/Kitchen



1 Rushmere Avenue

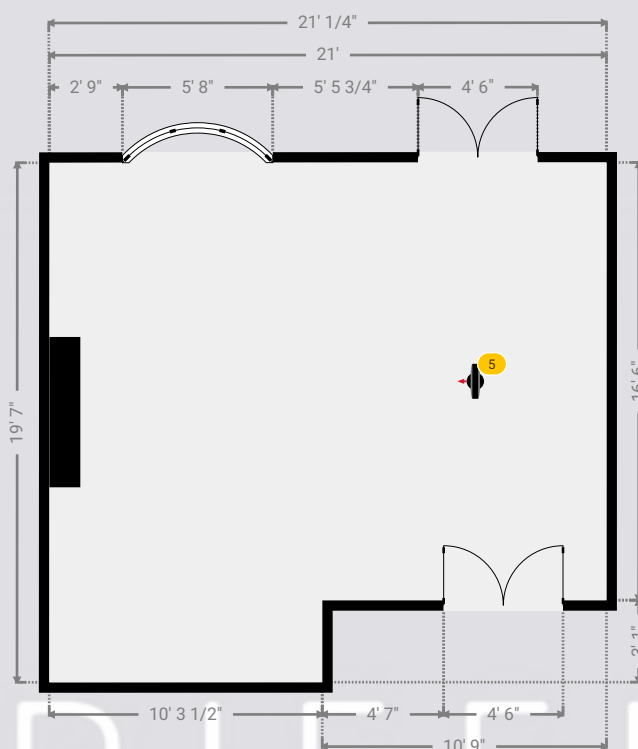
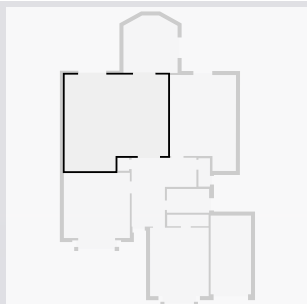
1 Rushmere Avenue, RM14 3AW Upminster, England, GB

TOTAL AREA: 2109.25 sq ft • LIVING AREA: 1978.05 sq ft • FLOORS: 2



▼ Lounge & Dining Ground Floor

WIDTH: 21' 1/4" • LENGTH: 19' 7"
AREA: 378.27 sq ft • PERIMETER: 81' 2 1/4"



▼ Lounge & Dining/Ground Floor

Photos

5 Photos (see photos page)

5 360 PANORAMA

Photo

1 Photo (see photos page)



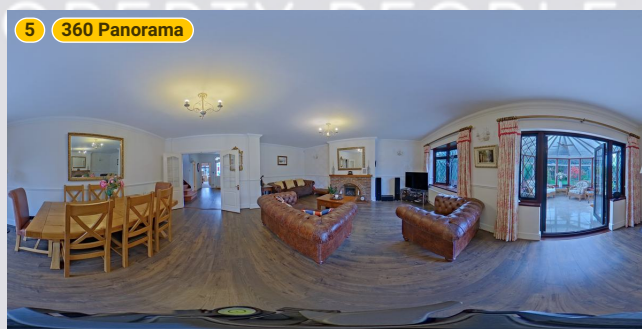
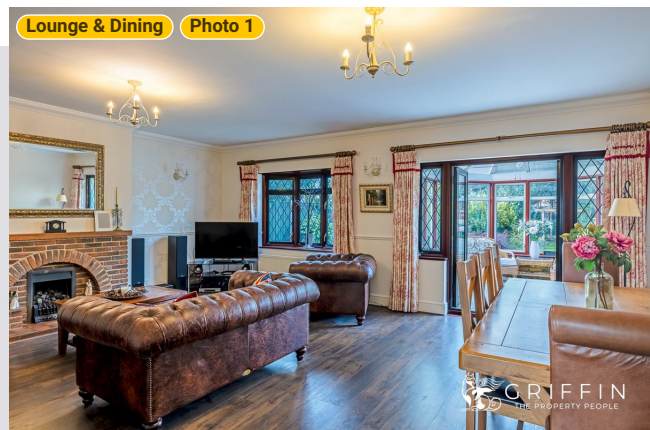
1 Rushmere Avenue

1 Rushmere Avenue, RM14 3AW Upminster, England, GB

TOTAL AREA: 2109.25 sq ft • LIVING AREA: 1978.05 sq ft • FLOORS: 2



▼ Photos/Lounge & Dining



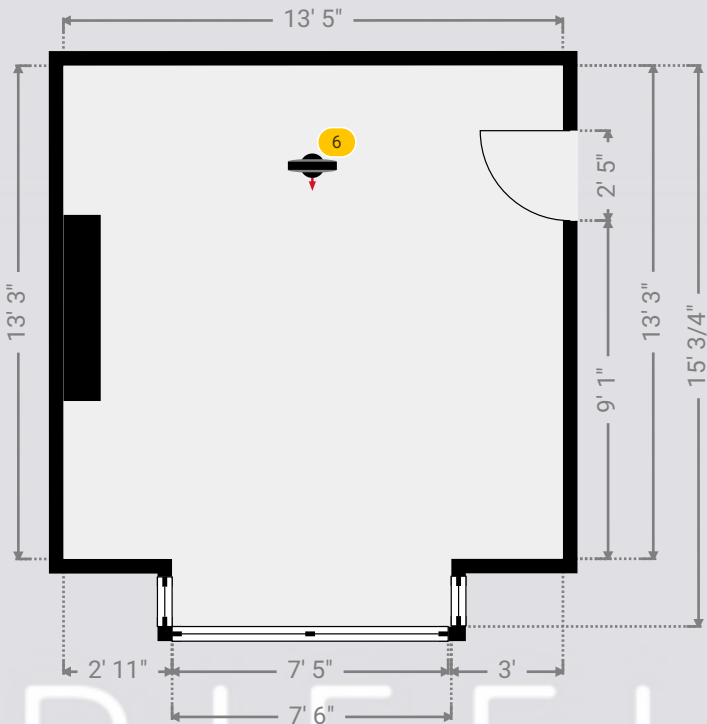
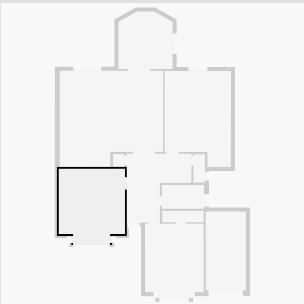
1 Rushmere Avenue

1 Rushmere Avenue, RM14 3AW Upminster, England, GB
TOTAL AREA: 2109.25 sq ft • LIVING AREA: 1978.05 sq ft • FLOORS: 2



▼ Sitting Room Ground Floor

WIDTH: 13' 5" • LENGTH: 15' 3/4"
AREA: 191.40 sq ft • PERIMETER: 56' 11 1/2"



▼ Sitting Room/Ground Floor

6 360 PANORAMA

Photo
1 Photo (see photos page)



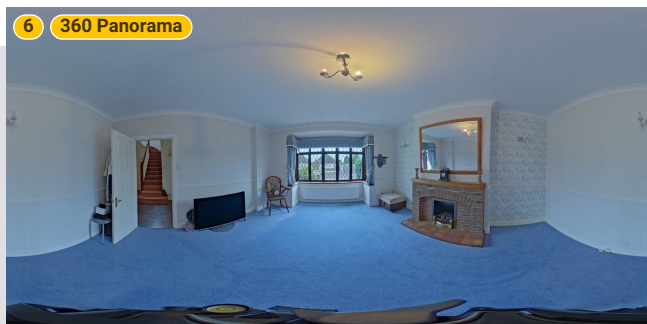
1 Rushmere Avenue

1 Rushmere Avenue, RM14 3AW Upminster, England, GB

TOTAL AREA: 2109.25 sq ft • LIVING AREA: 1978.05 sq ft • FLOORS: 2



▼ Photos/Sitting Room



1 Rushmere Avenue

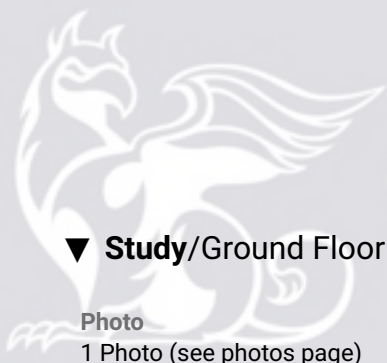
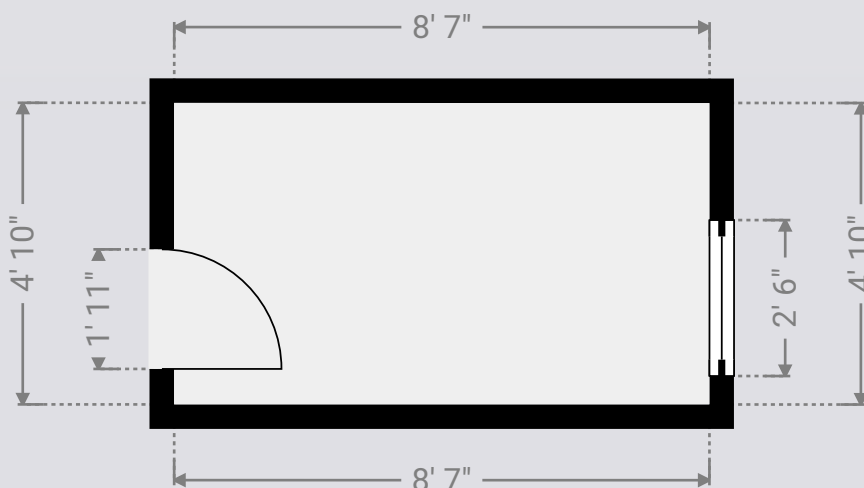
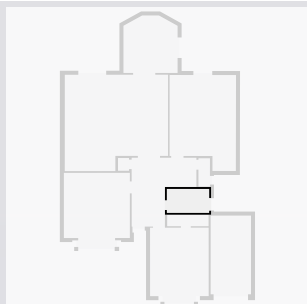
1 Rushmere Avenue, RM14 3AW Upminster, England, GB

TOTAL AREA: 2109.25 sq ft • LIVING AREA: 1978.05 sq ft • FLOORS: 2



▼ Study Ground Floor

WIDTH: 8' 7" • LENGTH: 4' 10"
AREA: 41.49 sq ft • PERIMETER: 26' 10"



▼ Study/Ground Floor

Photo

1 Photo (see photos page)

GRIFFIN
THE PROPERTY PEOPLE

1 Rushmere Avenue

1 Rushmere Avenue, RM14 3AW Upminster, England, GB

TOTAL AREA: 2109.25 sq ft • LIVING AREA: 1978.05 sq ft • FLOORS: 2



▼ Photos/Study



1 Rushmere Avenue

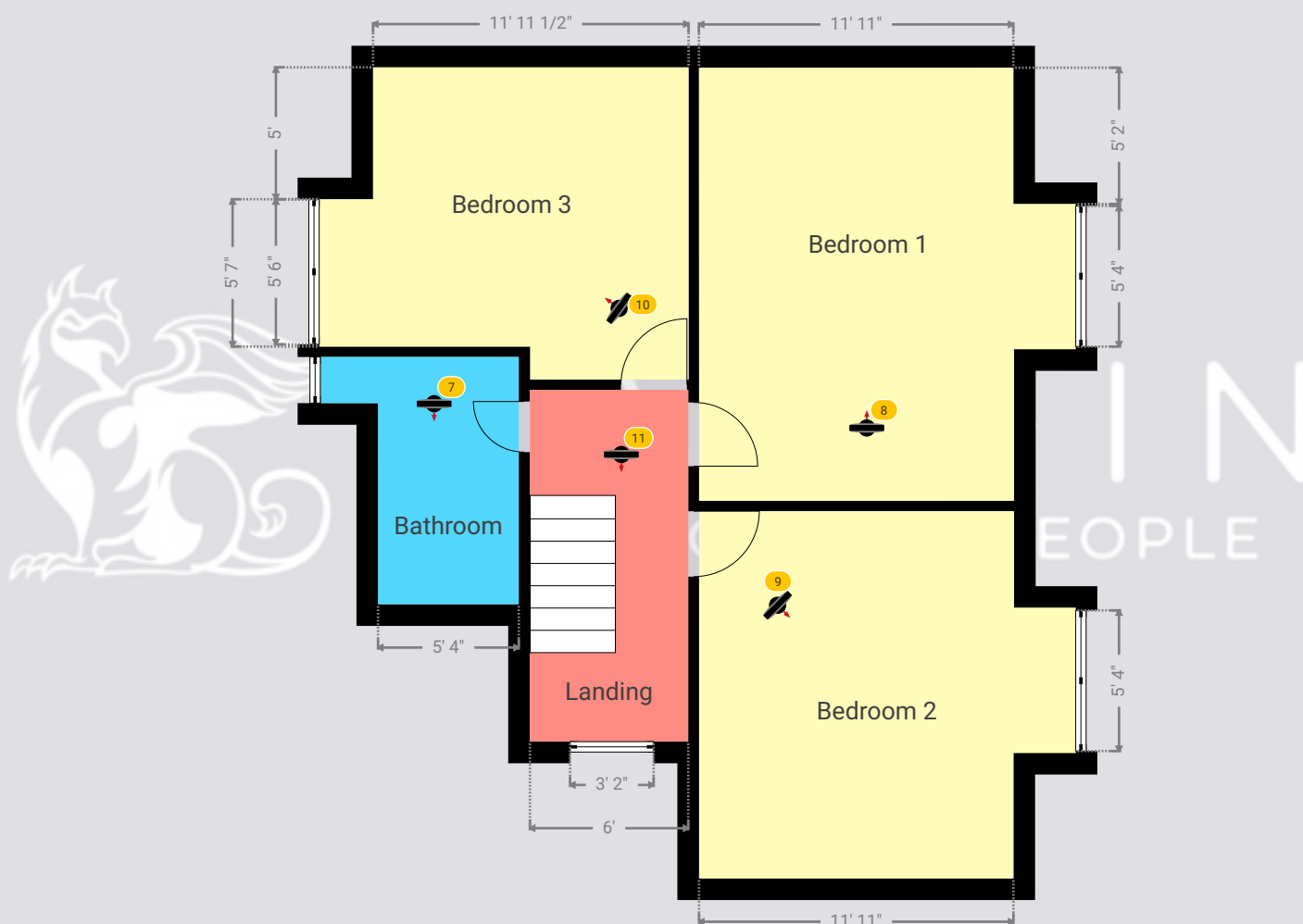
1 Rushmere Avenue, RM14 3AW Upminster, England, GB

TOTAL AREA: 2109.25 sq ft • LIVING AREA: 1978.05 sq ft • FLOORS: 2



▼ 1st Floor

TOTAL AREA: 666.64 sq ft • LIVING AREA: 666.64 sq ft •



1 Rushmere Avenue

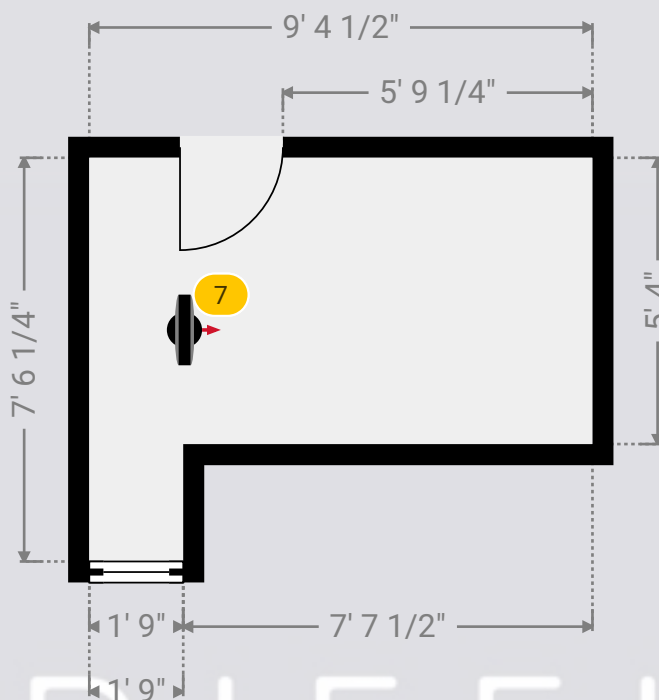
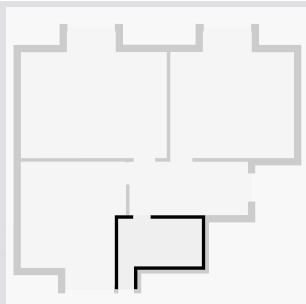
1 Rushmere Avenue, RM14 3AW Upminster, England, GB

TOTAL AREA: 2109.25 sq ft • LIVING AREA: 1978.05 sq ft • FLOORS: 2



▼ Bathroom 1st Floor

WIDTH: 9' 4 1/2" • LENGTH: 7' 6 1/4"
AREA: 53.83 sq ft • PERIMETER: 33' 9 1/2"



▼ Bathroom/1st Floor

Photo

1 Photo (see photos page)

7 360 PANORAMA

Photo

1 Photo (see photos page)



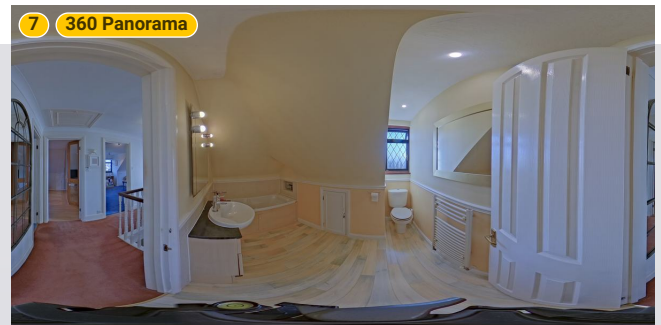
1 Rushmere Avenue

1 Rushmere Avenue, RM14 3AW Upminster, England, GB

TOTAL AREA: 2109.25 sq ft • LIVING AREA: 1978.05 sq ft • FLOORS: 2



▼ Photos/Bathroom



1 Rushmere Avenue

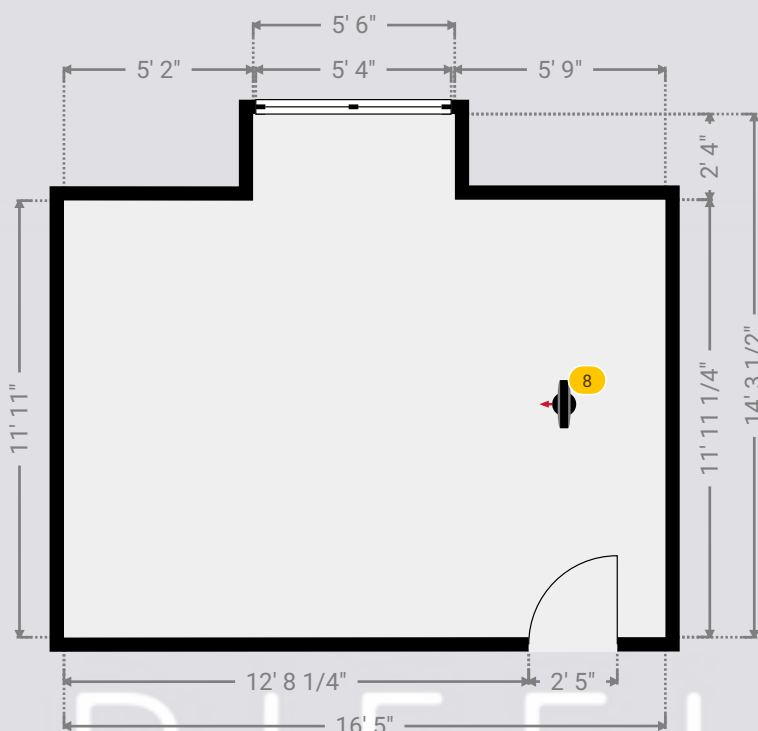
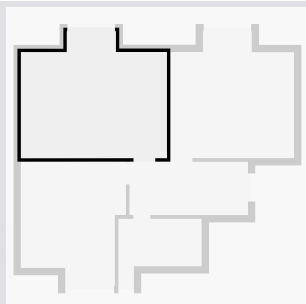
1 Rushmere Avenue, RM14 3AW Upminster, England, GB

TOTAL AREA: 2109.25 sq ft • LIVING AREA: 1978.05 sq ft • FLOORS: 2



▼ Bedroom 1 1st Floor

WIDTH: 16' 5" • LENGTH: 14' 3 1/2"
AREA: 208.75 sq ft • PERIMETER: 61' 4 3/4"



▼ Bedroom 1/1st Floor

Photo

1 Photo (see photos page)

8 360 PANORAMA

Photo

1 Photo (see photos page)



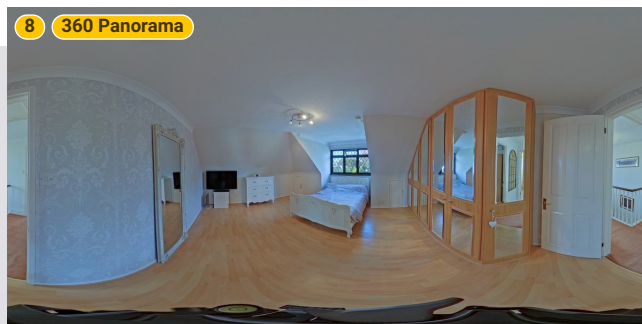
1 Rushmere Avenue

1 Rushmere Avenue, RM14 3AW Upminster, England, GB

TOTAL AREA: 2109.25 sq ft • LIVING AREA: 1978.05 sq ft • FLOORS: 2



▼ Photos/Bedroom 1



GRIFFIN
THE PROPERTY PEOPLE

1 Rushmere Avenue

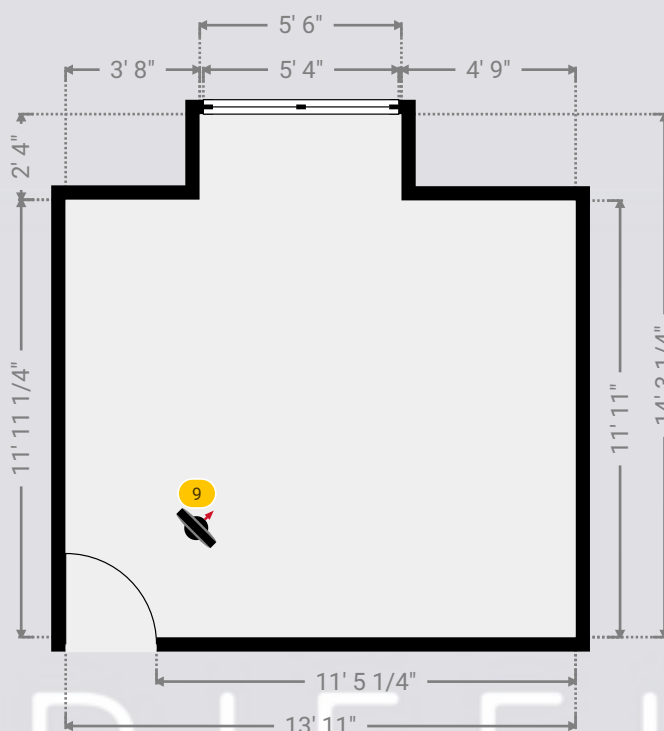
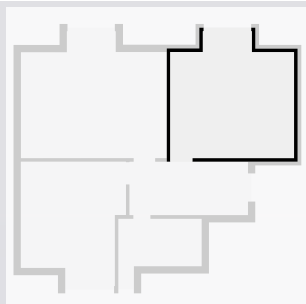
1 Rushmere Avenue, RM14 3AW Upminster, England, GB

TOTAL AREA: 2109.25 sq ft • LIVING AREA: 1978.05 sq ft • FLOORS: 2



▼ Bedroom 2 1st Floor

WIDTH: 13' 11" • LENGTH: 14' 3 1/4"
AREA: 178.95 sq ft • PERIMETER: 56' 4 3/4"



▼ Bedroom 2/1st Floor

Photos

2 Photos (see photos page)

9 360 PANORAMA

Photo

1 Photo (see photos page)



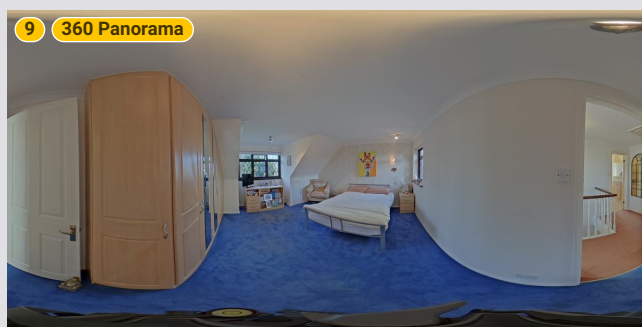
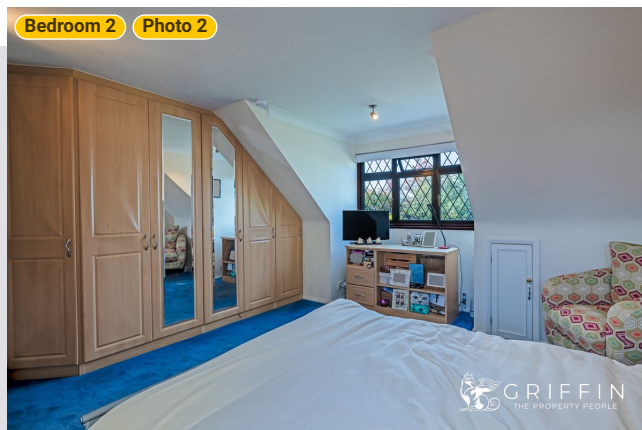
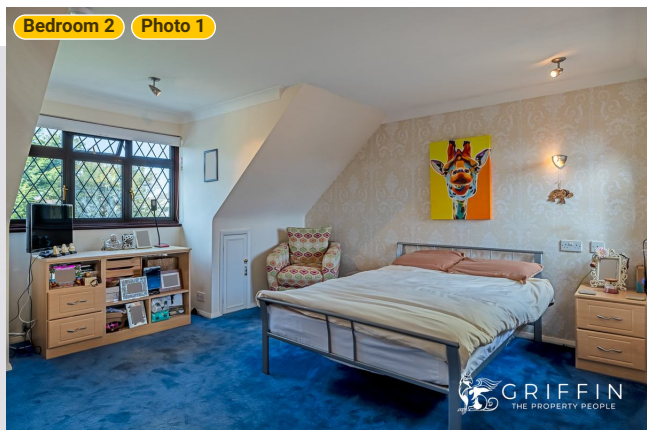
1 Rushmere Avenue

1 Rushmere Avenue, RM14 3AW Upminster, England, GB

TOTAL AREA: 2109.25 sq ft • LIVING AREA: 1978.05 sq ft • FLOORS: 2



▼ Photos/Bedroom 2



GRIFFIN
THE PROPERTY PEOPLE

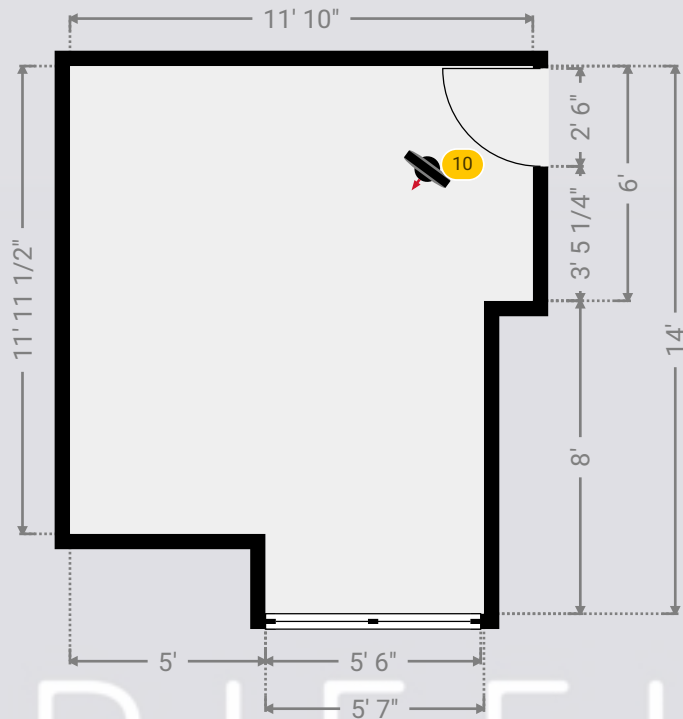
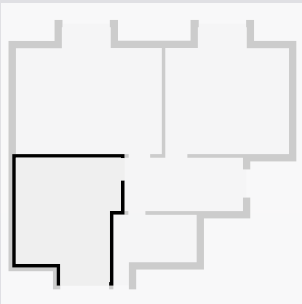
1 Rushmere Avenue

1 Rushmere Avenue, RM14 3AW Upminster, England, GB
TOTAL AREA: 2109.25 sq ft • LIVING AREA: 1978.05 sq ft • FLOORS: 2



▼ Bedroom 3 1st Floor

WIDTH: 11' 10" • LENGTH: 14'
AREA: 145.46 sq ft • PERIMETER: 51' 8"



▼ Bedroom 3/1st Floor

Photo
1 Photo (see photos page)

10 360 PANORAMA

Photo
1 Photo (see photos page)



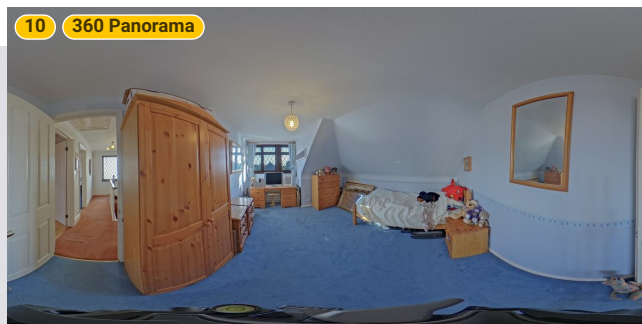
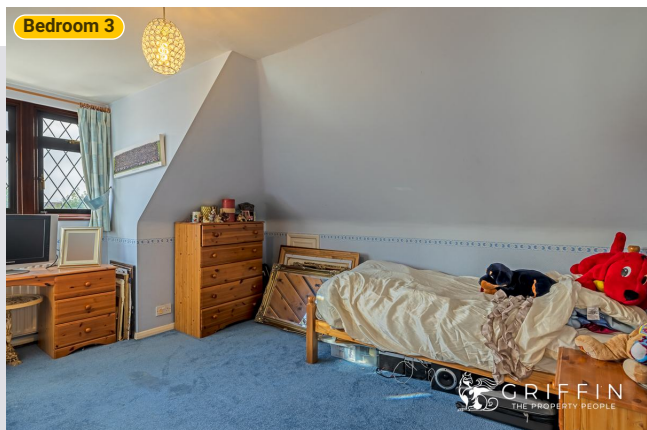
1 Rushmere Avenue

1 Rushmere Avenue, RM14 3AW Upminster, England, GB

TOTAL AREA: 2109.25 sq ft • LIVING AREA: 1978.05 sq ft • FLOORS: 2



▼ Photos/Bedroom 3



1 Rushmere Avenue

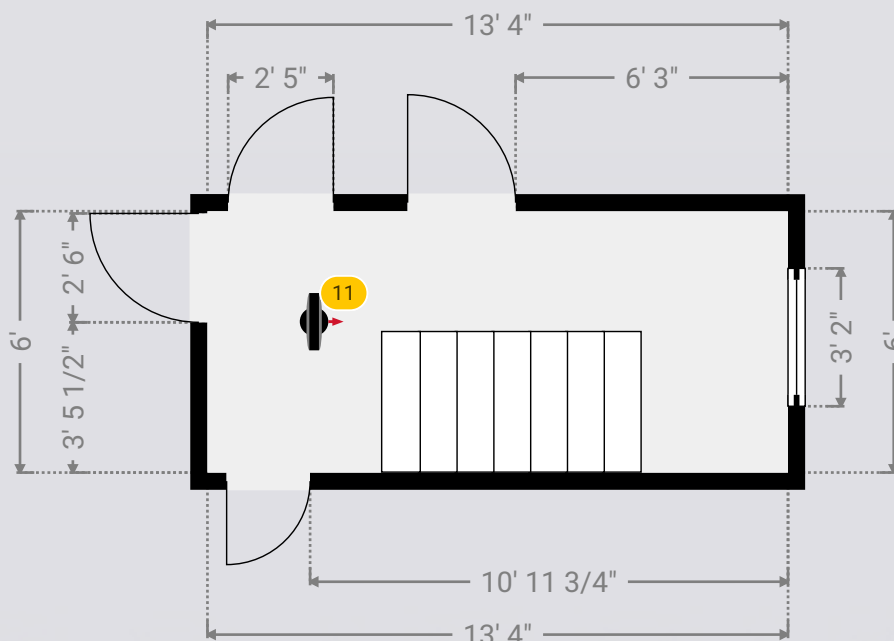
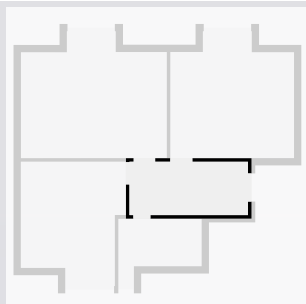
1 Rushmere Avenue, RM14 3AW Upminster, England, GB

TOTAL AREA: 2109.25 sq ft • LIVING AREA: 1978.05 sq ft • FLOORS: 2



▼ Landing 1st Floor

WIDTH: 13' 4" • LENGTH: 6'
AREA: 80.02 sq ft • PERIMETER: 38' 8"



▼ Landing/1st Floor

Photos

2 Photos (see photos page)

11 360 PANORAMA

Photo

1 Photo (see photos page)



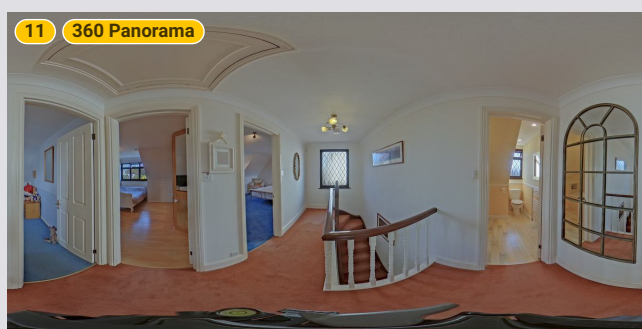
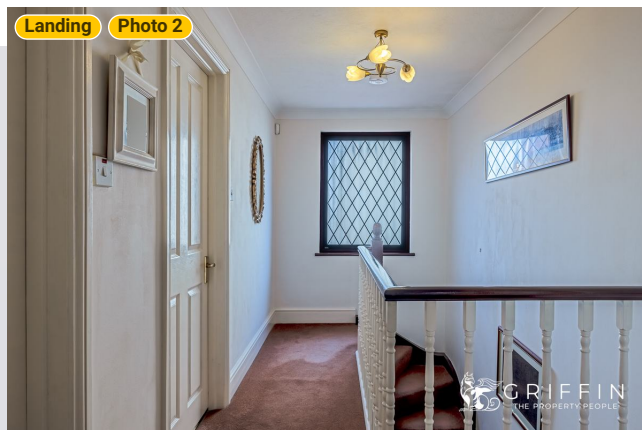
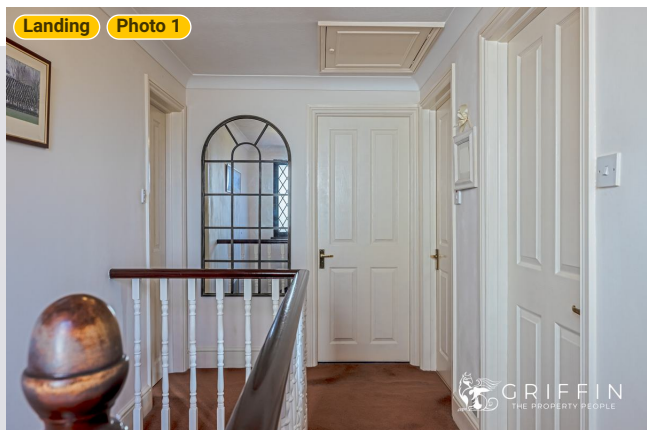
1 Rushmere Avenue

1 Rushmere Avenue, RM14 3AW Upminster, England, GB

TOTAL AREA: 2109.25 sq ft • LIVING AREA: 1978.05 sq ft • FLOORS: 2



▼ Photos/Landing



GRIFFIN
THE PROPERTY PEOPLE