

11 Engayne Gardens

SUBMITTED BY
Ian Haylett

CREATED ON
2025-02-24

LOCATION
11 Engayne Gardens
RM14 Upminster
England
GB



Total area
2225.36 sq ft

Floors
2



GRIFFIN
THE PROPERTY PEOPLE

11 Engayne Gardens

11 Engayne Gardens, RM14 Upminster, England, GB
TOTAL AREA: 2225.36 sq ft • LIVING AREA: 2043.29 sq ft • FLOORS: 2



▼ Ground Floor

TOTAL AREA: 1403.59 sq ft • LIVING AREA: 1221.51 sq ft •



The Griffin Property Group take no responsibility for any error, omission, misstatement or use of data shown. This plan is for illustrative purposes only and whilst every attempt has been made to ensure the accuracy of the floorplan shown, all measurements, positioning, fixtures, fittings and any other data shown are an approximate interpretation for illustrative purposes only. These plans are the property of The Griffin Property Group and must not be reproduced in any form without our permission.

0' 4' 8' 12'

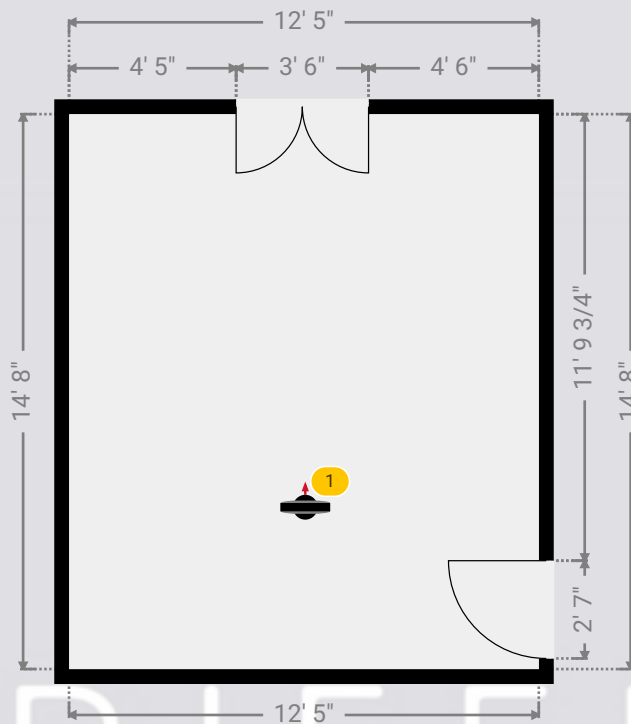
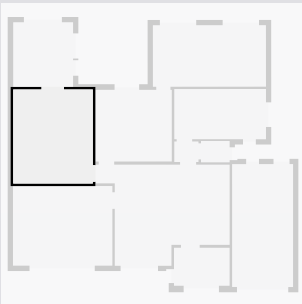
11 Engayne Gardens

11 Engayne Gardens, RM14 Upminster, England, GB
TOTAL AREA: 2225.36 sq ft • LIVING AREA: 2043.29 sq ft • FLOORS: 2



▼ Dining Room Ground Floor

WIDTH: 12' 5" • LENGTH: 14' 8"
AREA: 182.11 sq ft • PERIMETER: 54' 2"



▼ Dining Room/Ground Floor

Photos
2 Photos (see photos page)

1 360 PANORAMA

Photo
1 Photo (see photos page)



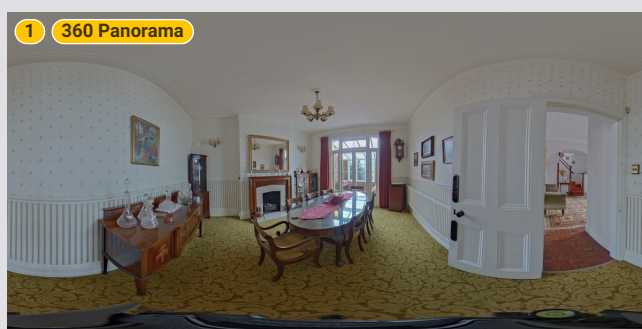
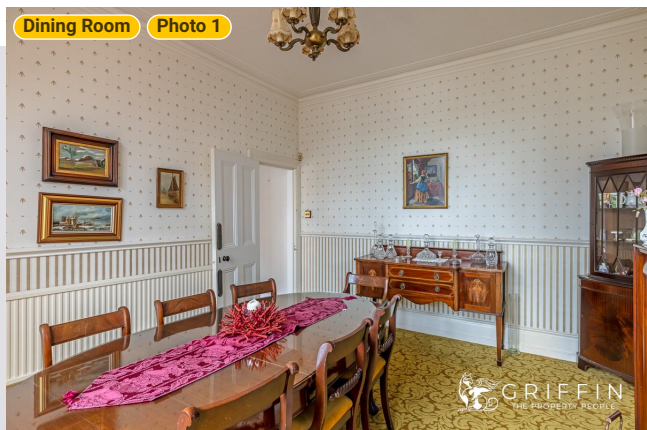
11 Engayne Gardens

11 Engayne Gardens, RM14 Upminster, England, GB

TOTAL AREA: 2225.36 sq ft • LIVING AREA: 2043.29 sq ft • FLOORS: 2



▼ Photos/Dining Room



GRIFFIN
THE PROPERTY PEOPLE

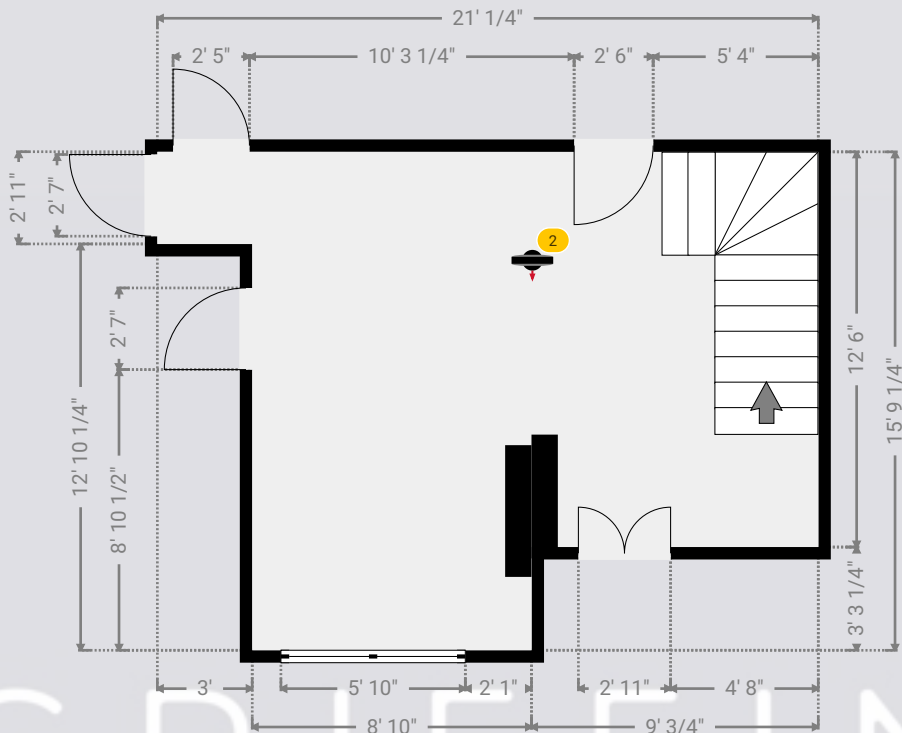
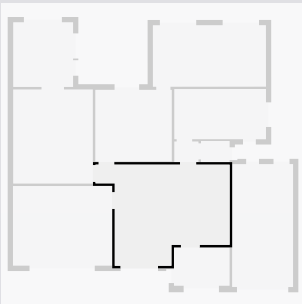
11 Engayne Gardens

11 Engayne Gardens, RM14 Upminster, England, GB
TOTAL AREA: 2225.36 sq ft • LIVING AREA: 2043.29 sq ft • FLOORS: 2



▼ Entrance Hall Ground Floor

WIDTH: 20' 11" • LENGTH: 15' 9 1/4"
AREA: 261.44 sq ft • PERIMETER: 73' 4"



▼ Entrance Hall/Ground Floor

Photos
4 Photos (see photos page)

2 360 PANORAMA

Photo
1 Photo (see photos page)

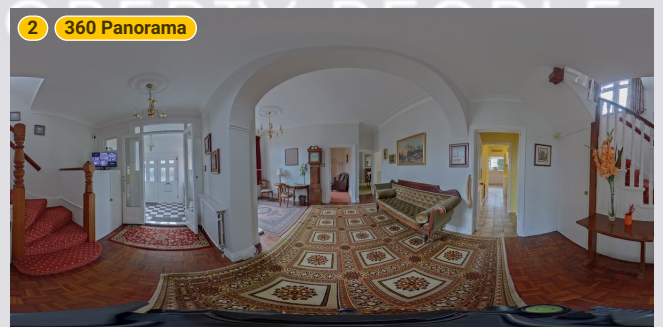
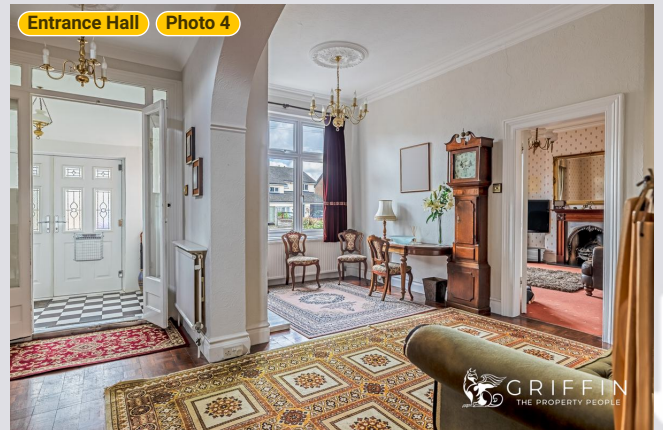
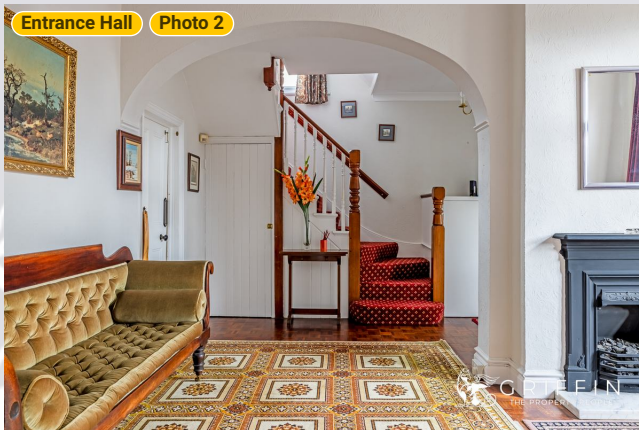
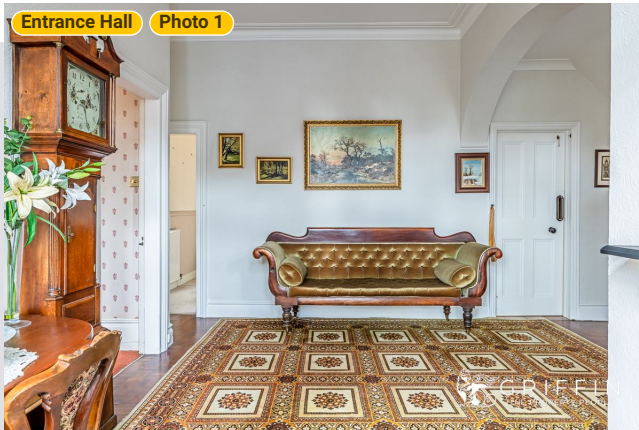


11 Engayne Gardens

11 Engayne Gardens, RM14 Upminster, England, GB
TOTAL AREA: 2225.36 sq ft • LIVING AREA: 2043.29 sq ft • FLOORS: 2



▼ Photos/Entrance Hall



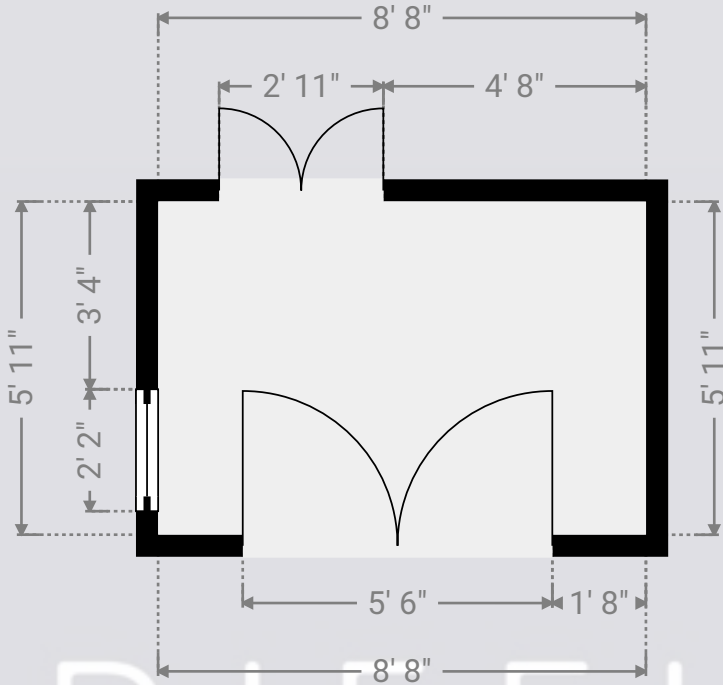
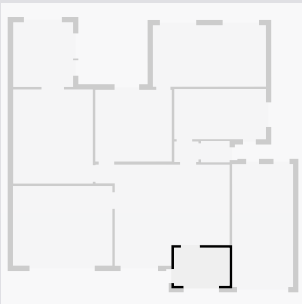
11 Engayne Gardens

11 Engayne Gardens, RM14 Upminster, England, GB
TOTAL AREA: 2225.36 sq ft • LIVING AREA: 2043.29 sq ft • FLOORS: 2



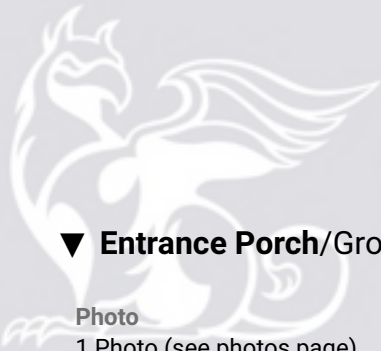
▼ Entrance Porch Ground Floor

WIDTH: 8' 8" • LENGTH: 5' 11"
AREA: 51.29 sq ft • PERIMETER: 29' 2"



▼ Entrance Porch/Ground Floor

Photo
1 Photo (see photos page)



GRIFFIN
THE PROPERTY PEOPLE

11 Engayne Gardens

11 Engayne Gardens, RM14 Upminster, England, GB

TOTAL AREA: 2225.36 sq ft • LIVING AREA: 2043.29 sq ft • FLOORS: 2



▼ Photos/Entrance Porch



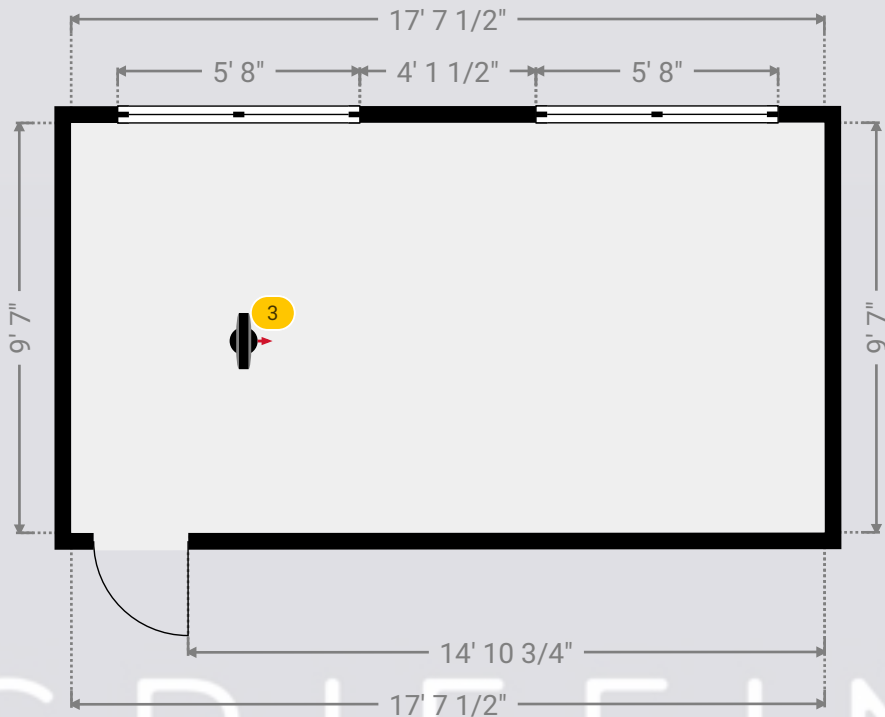
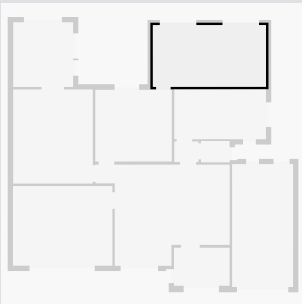
11 Engayne Gardens

11 Engayne Gardens, RM14 Upminster, England, GB
TOTAL AREA: 2225.36 sq ft • LIVING AREA: 2043.29 sq ft • FLOORS: 2



▼ Kitchen Ground Floor

WIDTH: 17' 7 1/2" • LENGTH: 9' 7"
AREA: 168.96 sq ft • PERIMETER: 54' 5"



▼ Kitchen/Ground Floor

Photos
5 Photos (see photos page)

3 360 PANORAMA
Photo
1 Photo (see photos page)



11 Engayne Gardens

11 Engayne Gardens, RM14 Upminster, England, GB

TOTAL AREA: 2225.36 sq ft • LIVING AREA: 2043.29 sq ft • FLOORS: 2



▼ Photos/Kitchen



11 Engayne Gardens

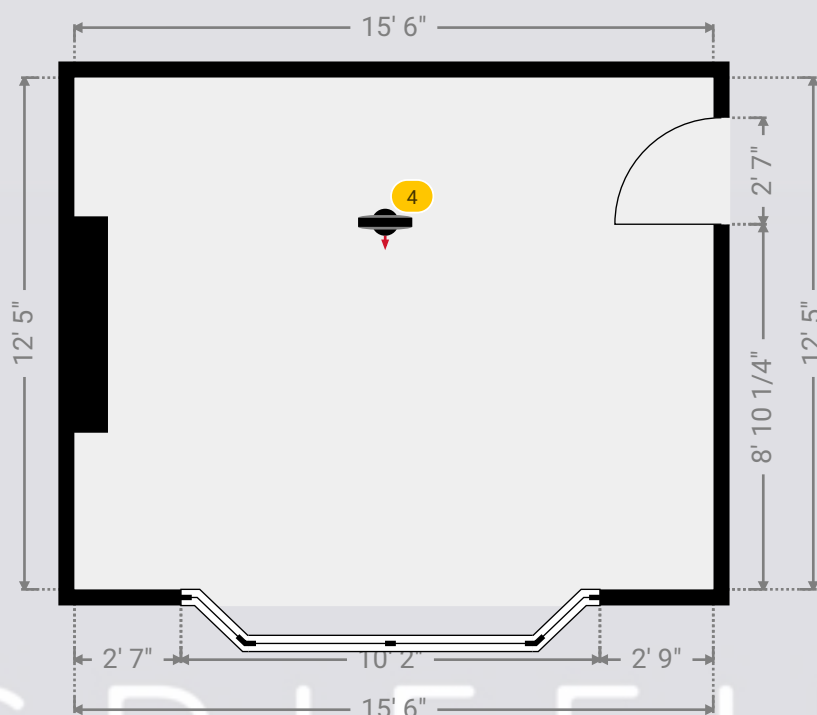
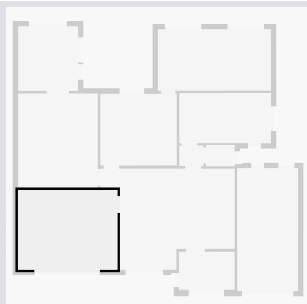
11 Engayne Gardens, RM14 Upminster, England, GB

TOTAL AREA: 2225.36 sq ft • LIVING AREA: 2043.29 sq ft • FLOORS: 2



▼ Lounge Ground Floor

WIDTH: 15' 6" • LENGTH: 12' 5"
AREA: 192.45 sq ft • PERIMETER: 55' 10"



▼ Lounge/Ground Floor

Photos

2 Photos (see photos page)

4 360 PANORAMA

Photo

1 Photo (see photos page)



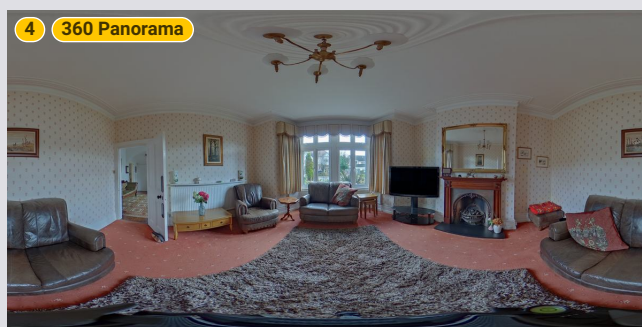
11 Engayne Gardens

11 Engayne Gardens, RM14 Upminster, England, GB

TOTAL AREA: 2225.36 sq ft • LIVING AREA: 2043.29 sq ft • FLOORS: 2



▼ Photos/Lounge



GRIFFIN
THE PROPERTY PEOPLE

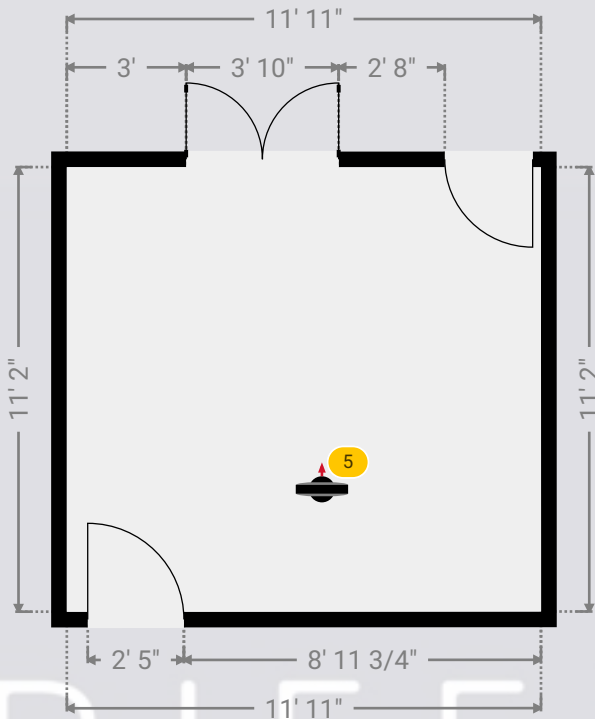
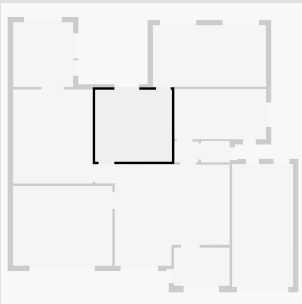
11 Engayne Gardens

11 Engayne Gardens, RM14 Upminster, England, GB
TOTAL AREA: 2225.36 sq ft • LIVING AREA: 2043.29 sq ft • FLOORS: 2



▼ Sitting Room Ground Floor

WIDTH: 11' 11" • LENGTH: 11' 2"
AREA: 133.11 sq ft • PERIMETER: 46' 2"



▼ Sitting Room/Ground Floor

Photos
2 Photos (see photos page)

5 360 PANORAMA

Photo
1 Photo (see photos page)

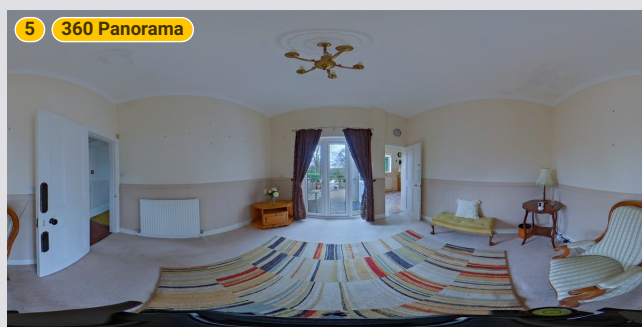
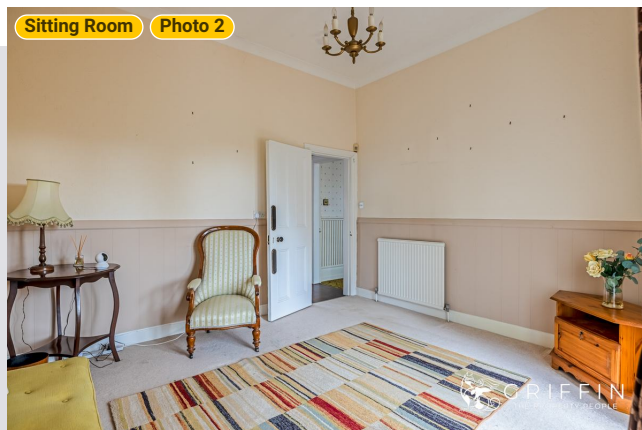


11 Engayne Gardens

11 Engayne Gardens, RM14 Upminster, England, GB
TOTAL AREA: 2225.36 sq ft • LIVING AREA: 2043.29 sq ft • FLOORS: 2



▼ Photos/Sitting Room



GRIFFIN
THE PROPERTY PEOPLE

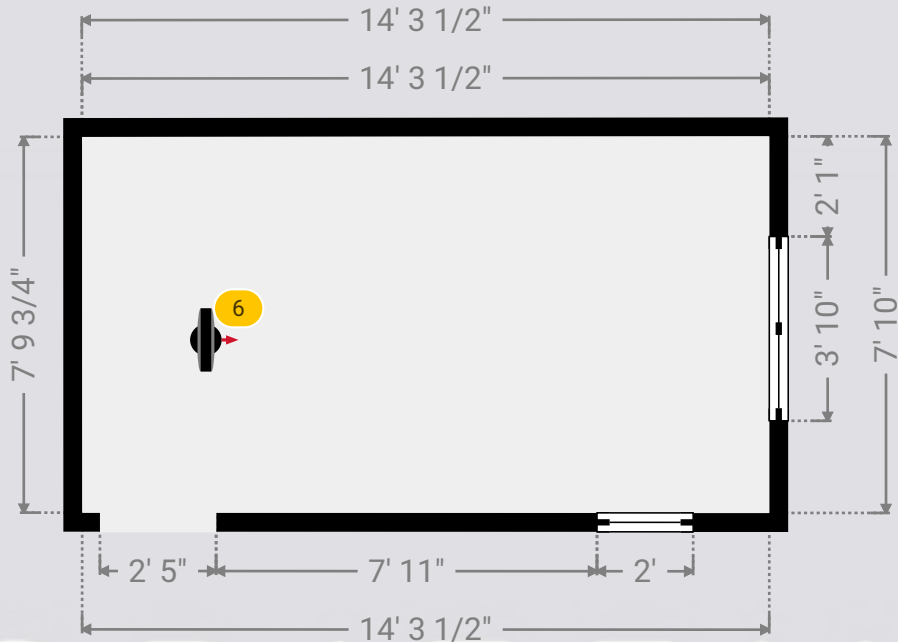
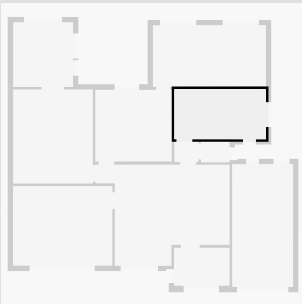
11 Engayne Gardens

11 Engayne Gardens, RM14 Upminster, England, GB
TOTAL AREA: 2225.36 sq ft • LIVING AREA: 2043.29 sq ft • FLOORS: 2



▼ Utility Room Ground Floor

WIDTH: 14' 3 1/2" • LENGTH: 7' 10"
AREA: 111.82 sq ft • PERIMETER: 44' 2 3/4"



▼ Utility Room/Ground Floor

Photos
2 Photos (see photos page)

6 360 PANORAMA
Photo
1 Photo (see photos page)



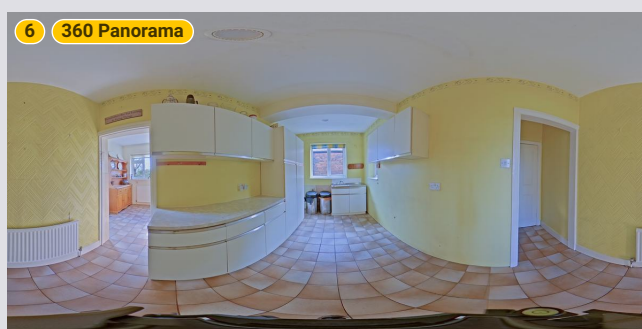
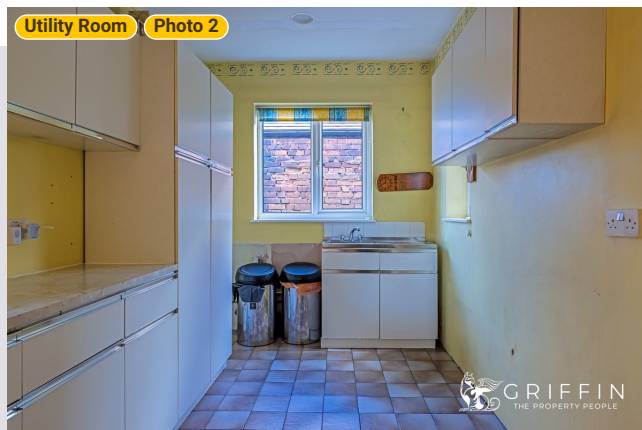
11 Engayne Gardens

11 Engayne Gardens, RM14 Upminster, England, GB

TOTAL AREA: 2225.36 sq ft • LIVING AREA: 2043.29 sq ft • FLOORS: 2



▼ Photos/Utility Room



GRIFFIN
THE PROPERTY PEOPLE

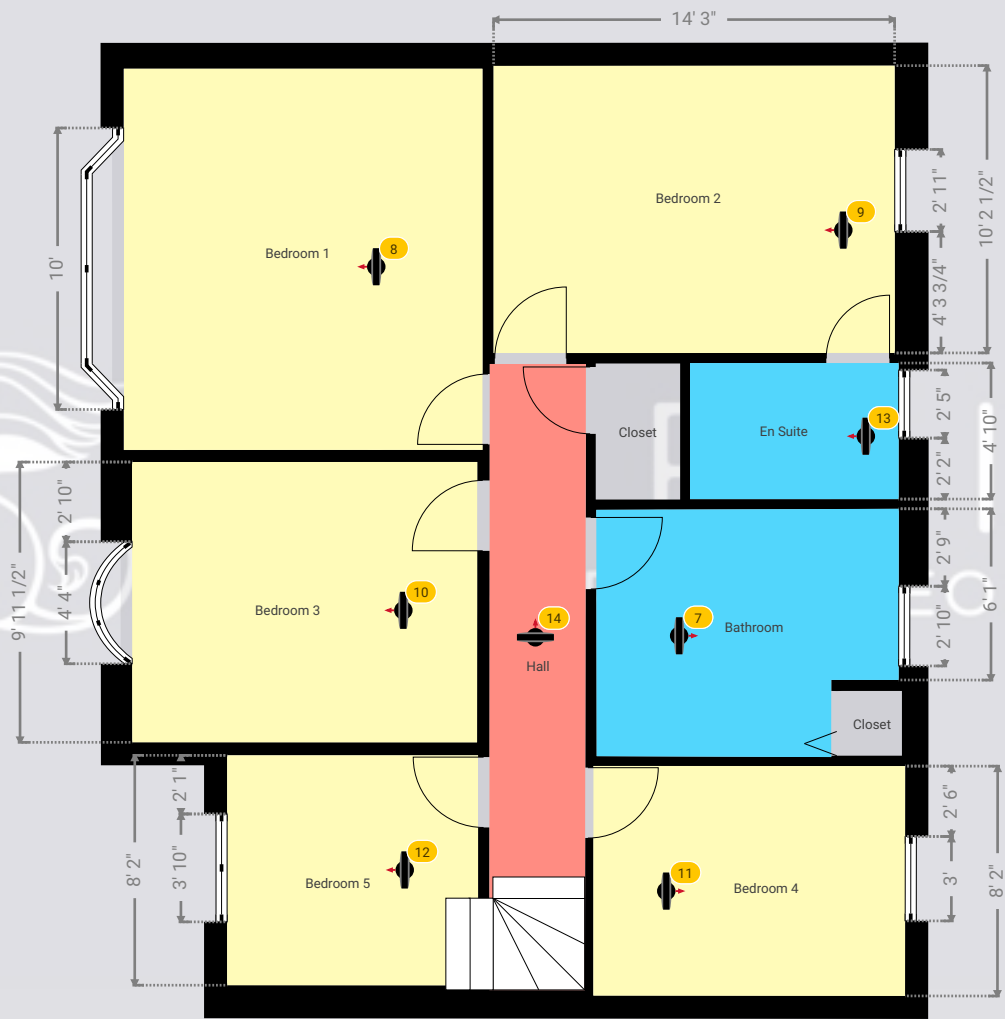
11 Engayne Gardens

11 Engayne Gardens, RM14 Upminster, England, GB
TOTAL AREA: 2225.36 sq ft • LIVING AREA: 2043.29 sq ft • FLOORS: 2



▼ 1st Floor

TOTAL AREA: 821.77 sq ft • LIVING AREA: 821.77 sq ft •



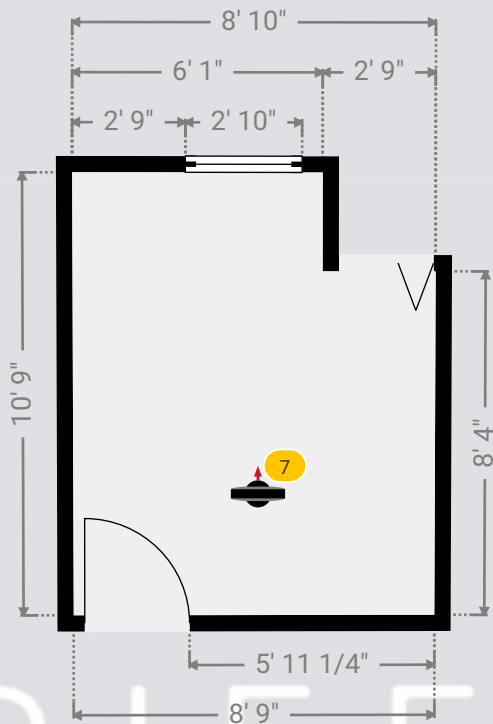
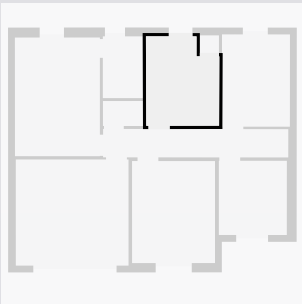
11 Engayne Gardens

11 Engayne Gardens, RM14 Upminster, England, GB
TOTAL AREA: 2225.36 sq ft • LIVING AREA: 2043.29 sq ft • FLOORS: 2



▼ Bathroom 1st Floor

WIDTH: 8' 10" • LENGTH: 10' 9"
AREA: 87.84 sq ft • PERIMETER: 39' 3/4"



▼ Bathroom/1st Floor

Photos
3 Photos (see photos page)

7 360 PANORAMA

Photo
1 Photo (see photos page)

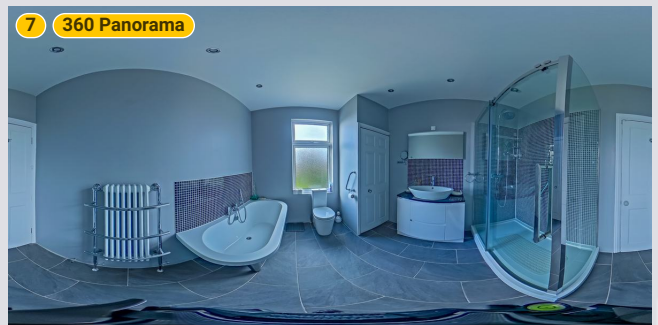
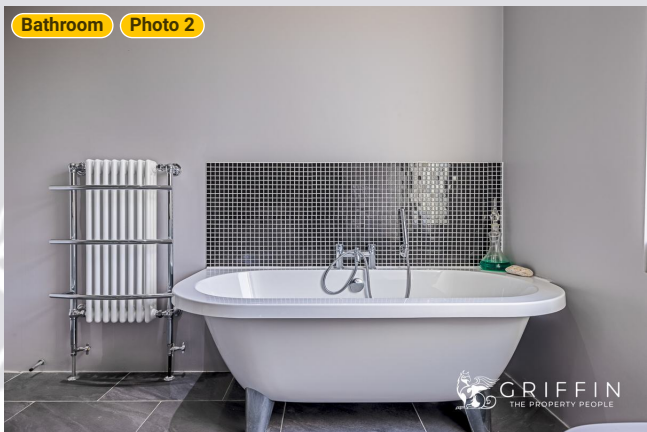
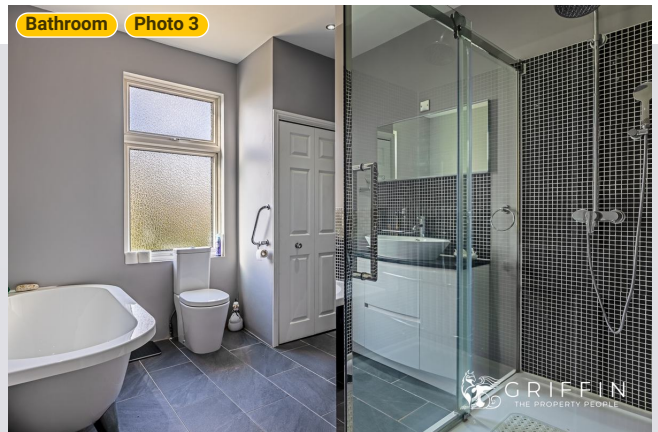
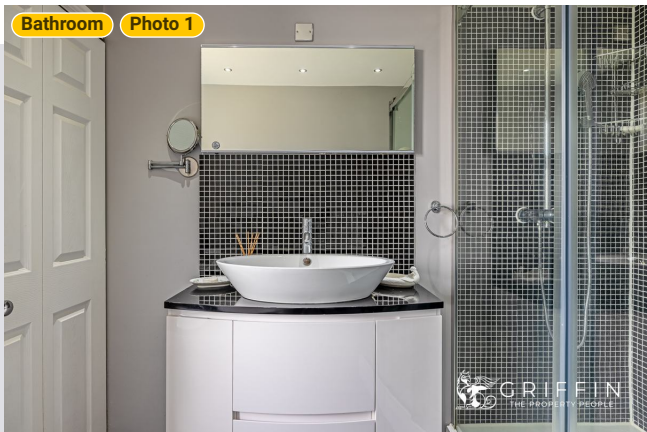


11 Engayne Gardens

11 Engayne Gardens, RM14 Upminster, England, GB
TOTAL AREA: 2225.36 sq ft • LIVING AREA: 2043.29 sq ft • FLOORS: 2



▼ Photos/Bathroom



THE GRIFFIN
THE PROPERTY PEOPLE

11 Engayne Gardens

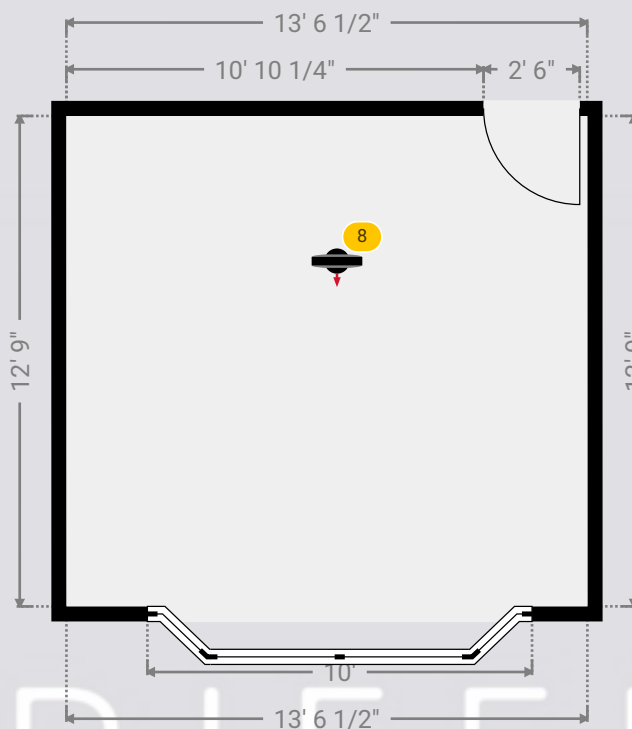
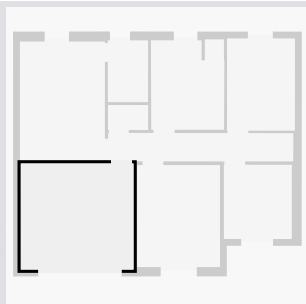
11 Engayne Gardens, RM14 Upminster, England, GB

TOTAL AREA: 2225.36 sq ft • LIVING AREA: 2043.29 sq ft • FLOORS: 2



▼ Bedroom 1 1st Floor

WIDTH: 13' 6 1/2" • LENGTH: 12' 9"
AREA: 172.67 sq ft • PERIMETER: 52' 7"



▼ Bedroom 1/1st Floor

Photos

3 Photos (see photos page)

8 360 PANORAMA

Photo

1 Photo (see photos page)

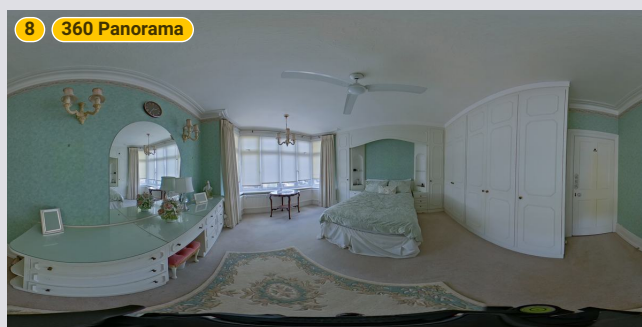
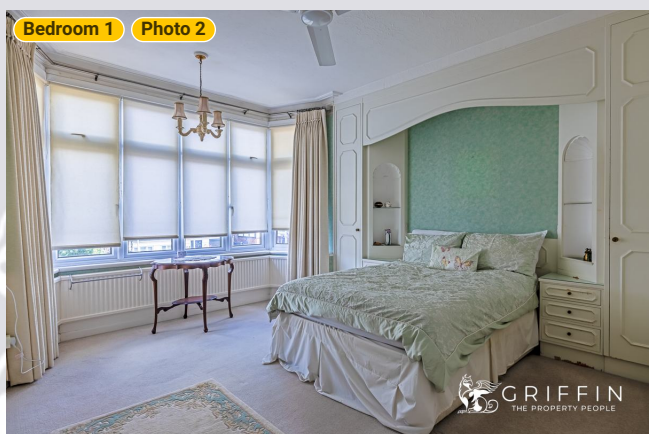
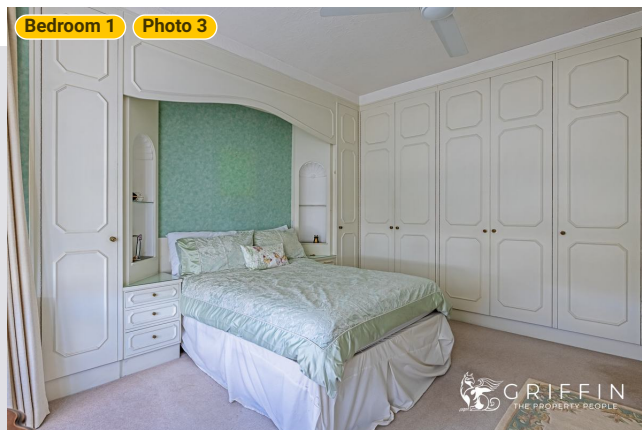
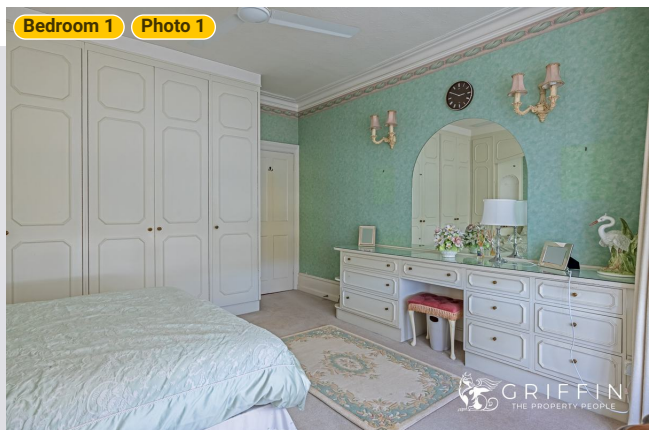


11 Engayne Gardens

11 Engayne Gardens, RM14 Upminster, England, GB
TOTAL AREA: 2225.36 sq ft • LIVING AREA: 2043.29 sq ft • FLOORS: 2



▼ Photos/Bedroom 1



THE PROPERTY PEOPLE

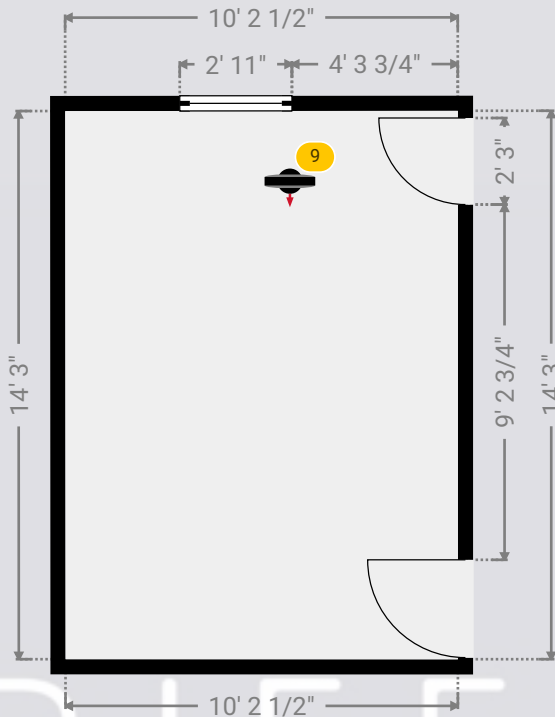
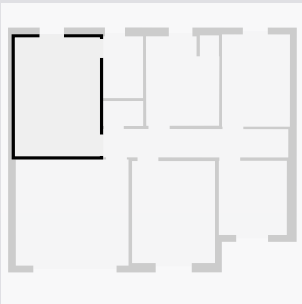
11 Engayne Gardens

11 Engayne Gardens, RM14 Upminster, England, GB
TOTAL AREA: 2225.36 sq ft • LIVING AREA: 2043.29 sq ft • FLOORS: 2



▼ Bedroom 2 1st Floor

WIDTH: 10' 2 1/2" • LENGTH: 14' 3"
AREA: 145.46 sq ft • PERIMETER: 48' 11"



▼ Bedroom 2/1st Floor

Photo
1 Photo (see photos page)

9 360 PANORAMA
Photo
1 Photo (see photos page)



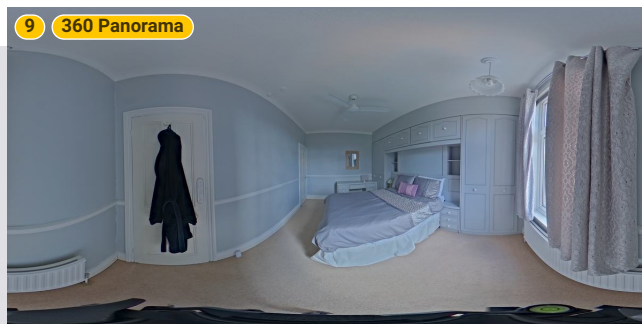
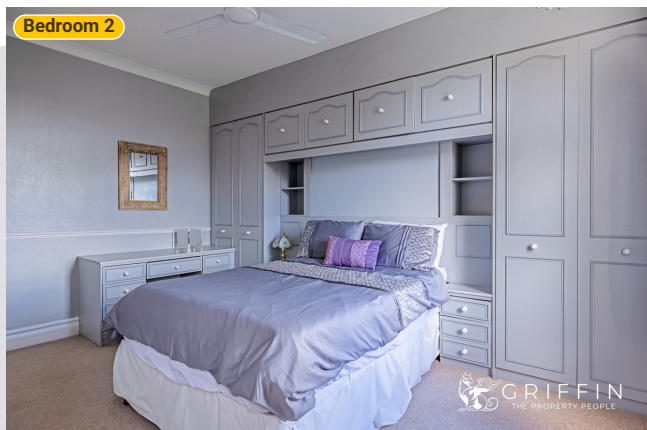
11 Engayne Gardens

11 Engayne Gardens, RM14 Upminster, England, GB

TOTAL AREA: 2225.36 sq ft • LIVING AREA: 2043.29 sq ft • FLOORS: 2



▼ Photos/Bedroom 2



GRIFFIN
THE PROPERTY PEOPLE

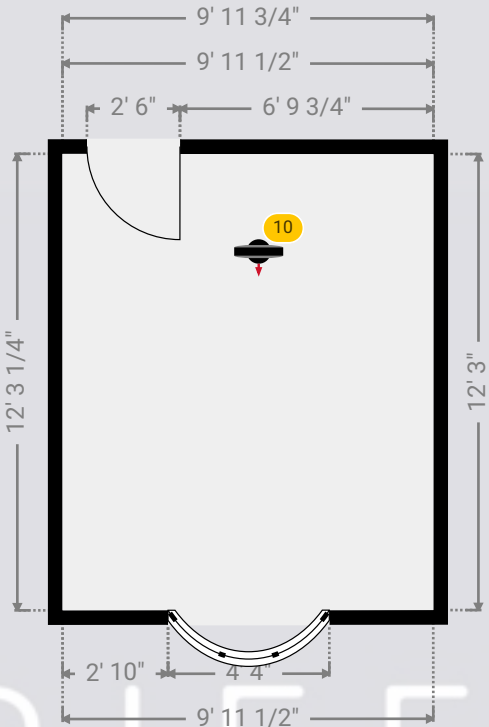
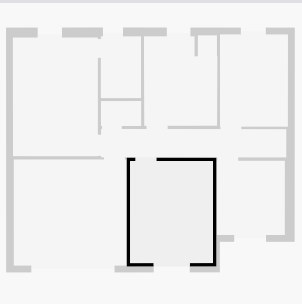
11 Engayne Gardens

11 Engayne Gardens, RM14 Upminster, England, GB
TOTAL AREA: 2225.36 sq ft • LIVING AREA: 2043.29 sq ft • FLOORS: 2



▼ Bedroom 3 1st Floor

WIDTH: 9' 11 3/4" • LENGTH: 12' 3 1/4"
AREA: 122.10 sq ft • PERIMETER: 44' 5 1/4"



▼ Bedroom 3/1st Floor

Photo
1 Photo (see photos page)

10 360 PANORAMA

Photo
1 Photo (see photos page)

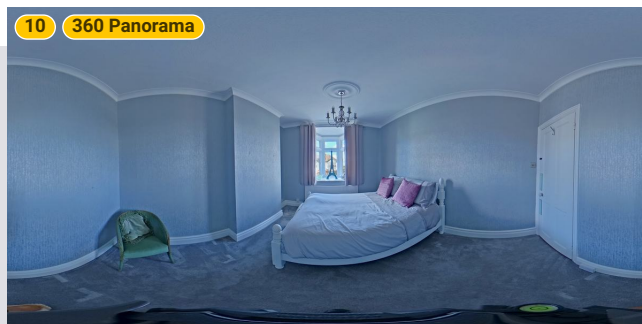


11 Engayne Gardens

11 Engayne Gardens, RM14 Upminster, England, GB
TOTAL AREA: 2225.36 sq ft • LIVING AREA: 2043.29 sq ft • FLOORS: 2



▼ Photos/Bedroom 3



GRIFFIN
THE PROPERTY PEOPLE

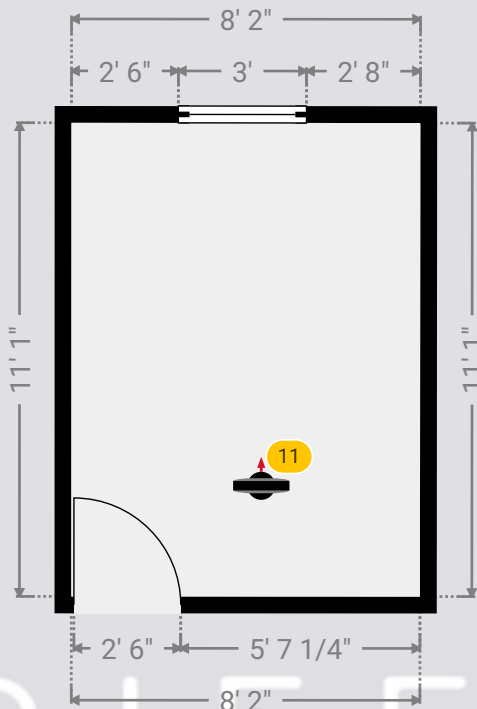
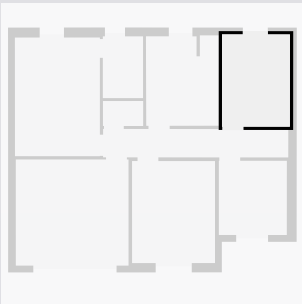
11 Engayne Gardens

11 Engayne Gardens, RM14 Upminster, England, GB
TOTAL AREA: 2225.36 sq ft • LIVING AREA: 2043.29 sq ft • FLOORS: 2



▼ Bedroom 4 1st Floor

WIDTH: 8' 2" • LENGTH: 11' 1"
AREA: 90.44 sq ft • PERIMETER: 38' 5 3/4"



▼ Bedroom 4/1st Floor

Photo
1 Photo (see photos page)

11 360 PANORAMA

Photo
1 Photo (see photos page)



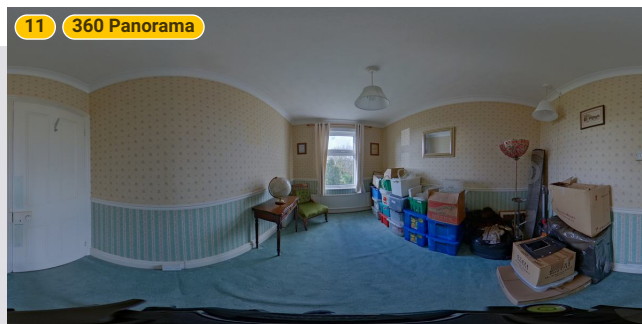
11 Engayne Gardens

11 Engayne Gardens, RM14 Upminster, England, GB

TOTAL AREA: 2225.36 sq ft • LIVING AREA: 2043.29 sq ft • FLOORS: 2



▼ Photos/Bedroom 4



GRIFFIN
THE PROPERTY PEOPLE

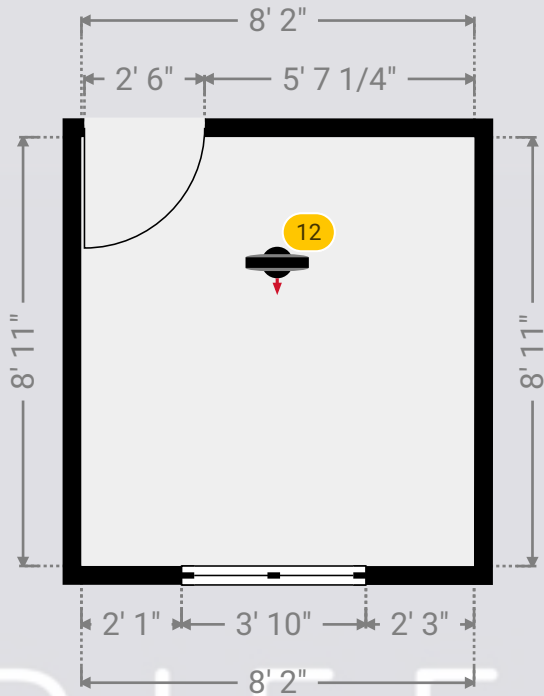
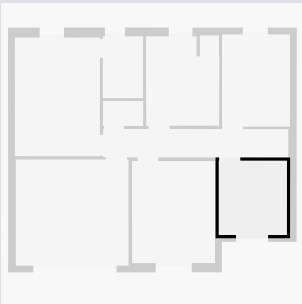
11 Engayne Gardens

11 Engayne Gardens, RM14 Upminster, England, GB
TOTAL AREA: 2225.36 sq ft • LIVING AREA: 2043.29 sq ft • FLOORS: 2



▼ Bedroom 5 1st Floor

WIDTH: 8' 2" • LENGTH: 8' 11"
AREA: 72.85 sq ft • PERIMETER: 34' 2"



▼ Bedroom 5/1st Floor

Photo
1 Photo (see photos page)

12 360 PANORAMA

Photo
1 Photo (see photos page)

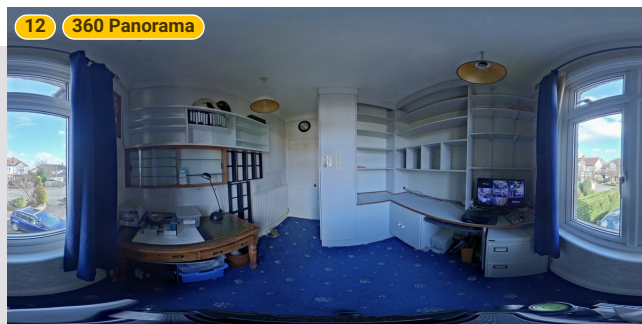


11 Engayne Gardens

11 Engayne Gardens, RM14 Upminster, England, GB
TOTAL AREA: 2225.36 sq ft • LIVING AREA: 2043.29 sq ft • FLOORS: 2



▼ Photos/Bedroom 5



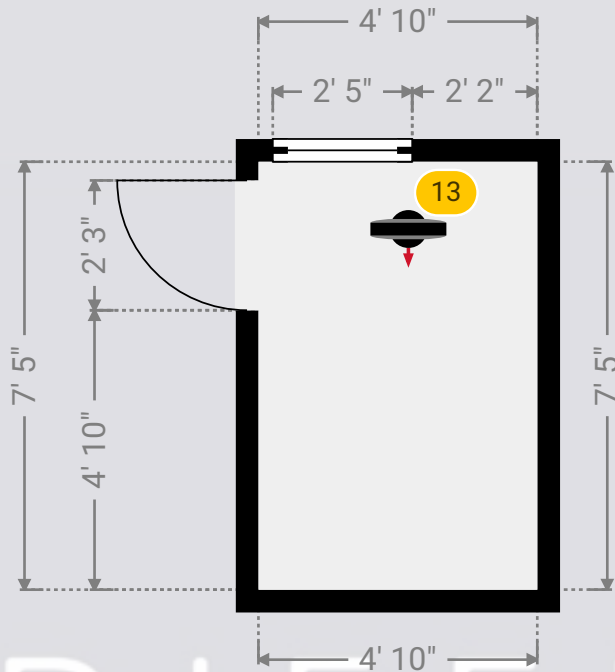
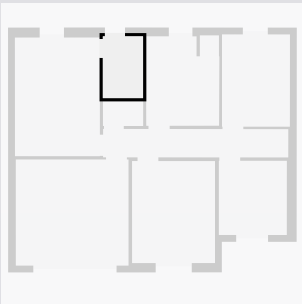
11 Engayne Gardens

11 Engayne Gardens, RM14 Upminster, England, GB
TOTAL AREA: 2225.36 sq ft • LIVING AREA: 2043.29 sq ft • FLOORS: 2



▼ En Suite 1st Floor

WIDTH: 4' 10" • LENGTH: 7' 5"
AREA: 35.84 sq ft • PERIMETER: 24' 6"



▼ En Suite/1st Floor

Photo
1 Photo (see photos page)

13 360 PANORAMA

Photo
1 Photo (see photos page)



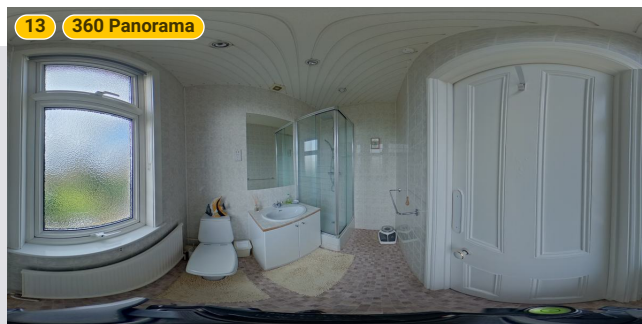
11 Engayne Gardens

11 Engayne Gardens, RM14 Upminster, England, GB

TOTAL AREA: 2225.36 sq ft • LIVING AREA: 2043.29 sq ft • FLOORS: 2



▼ Photos/En Suite



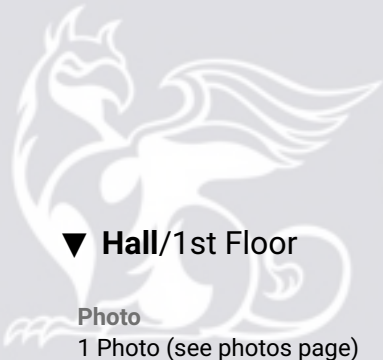
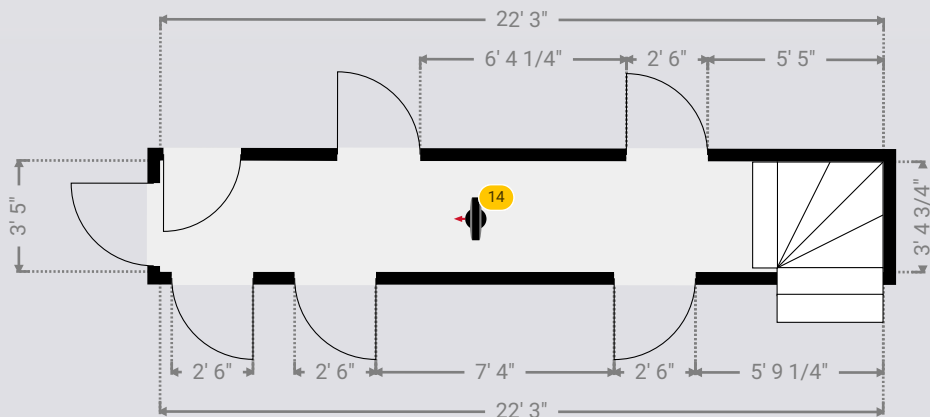
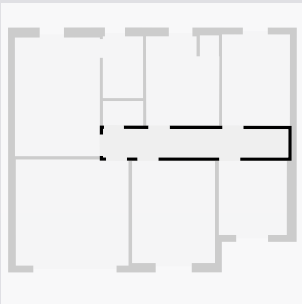
11 Engayne Gardens

11 Engayne Gardens, RM14 Upminster, England, GB
TOTAL AREA: 2225.36 sq ft • LIVING AREA: 2043.29 sq ft • FLOORS: 2



▼ Hall 1st Floor

WIDTH: 22' 3" • LENGTH: 3' 5"
AREA: 75.76 sq ft • PERIMETER: 51' 3 3/4"



▼ Hall/1st Floor

Photo
1 Photo (see photos page)

14 360 PANORAMA

Photo
1 Photo (see photos page)



11 Engayne Gardens

11 Engayne Gardens, RM14 Upminster, England, GB

TOTAL AREA: 2225.36 sq ft • LIVING AREA: 2043.29 sq ft • FLOORS: 2



▼ Photos/Hall

