



£5,000 per month

22, Leonard Court, Edwardes Square, W8 6NL



+ 3

+ 1

+ 1

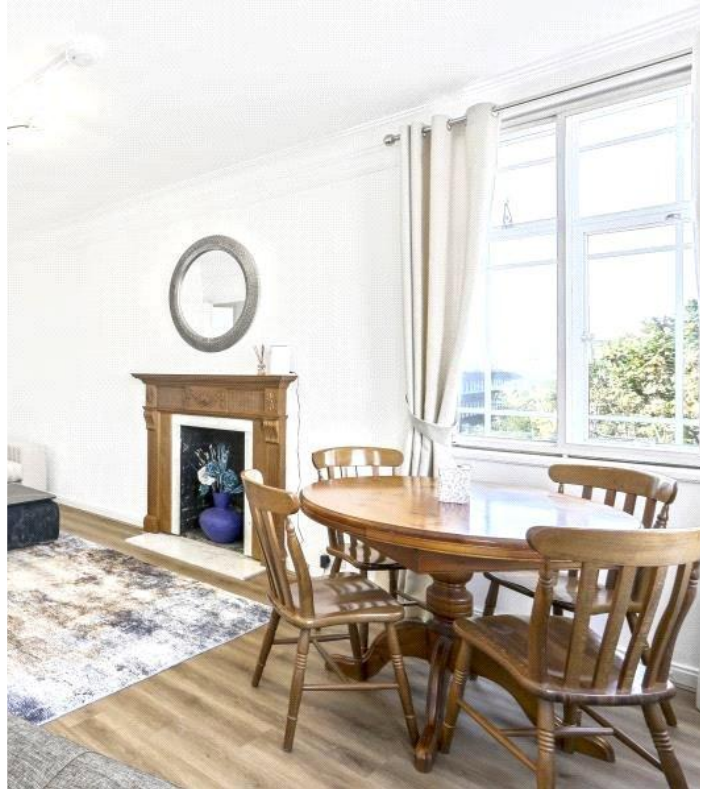
Tenure: To be advised

EPC: E (51)

Council Tax - F

About the Property

This beautifully renovated upper floor apartment offers modern living in one of London's most sought after locations. Boasting three generous bedrooms, the property is available part-furnished or fully furnished, offering flexibility to suit your lifestyle.



Location:

- • Porter
- • Newly Renovated
- • Heating & Hot Water Included
- • Moments From Hyde Park
- • Upper Floor With Lift
- • Access To Private Gardens and Tennis Court
- • Close To High Street Kensington Station
- • Deposit £6,923

£5,000 per month

22, Leonard Court, Edwardes Square, W8 6NL

The apartment features a bright and spacious living area with elegant wooden flooring throughout the main spaces, complemented by plush fitted carpets in the bedrooms. The contemporary kitchen is fully equipped with modern appliances and ample storage, ideal for both everyday living and entertaining. Access to private communal gardens and tennis court.

Each of the three bedrooms offers generous proportions and excellent storage, providing a comfortable and tranquil retreat.

Leonard Court benefits from a superb location, just moments from the vibrant amenities of Kensington High Street and Earl's Court. Residents enjoy excellent transport links, a wide array of shops, restaurants, and cafés, as well as close proximity to the beautiful green spaces of Holland Park.



LEONARD COURT, EDWARDES SQUARE, W8
TOTAL APPROX FLOOR PLAN AREA 899 SQ.FT (83 SQ.M)



Knightsbridge International Real Estate

5 Harwood Road
London, SW6 4QP

T: 020 8058 0052
E: info@kbire.co.uk

<https://kbire.co.uk/>

Score	Energy rating	Current	Potential
92+	A		
81-91	B		
69-80	C		78 C
55-68	D		
39-54	E	51 E	
21-38	F		
1-20	G		