



Henniker Mews, Cheslea, SW3  
London

£2,610,000

KNIGHTSBRIDGE  
INTERNATIONAL REAL ESTATE





Charming three-bedroom mews house within a beautiful gated development and situated in a highly sought after location within close proximity of both the Kings Road and Fulham Road. The unique appeal of the property is accentuated by the rare privilege of off-street parking, elevating both convenience and prestige.

Step inside to a delightful ambiance, where the cleverly designed layout maximizes natural light and fosters an open living experience on the ground floor. This seamless integration of space not only enhances the property's aesthetic but also creates an ideal setting for effortless entertaining and modern living.

To the first floor the property boasts principal bedroom with en-suite bathroom, two further double bedrooms and a family bathroom.

Henniker Mews, a picturesque cobbled haven, is accessible through two entrances from Callow Street. Positioned with enviable proximity between the renowned King's Road and the trendy Fulham Road, residents can indulge in the myriad offerings of fashionable restaurants, boutiques, and bars that define the cosmopolitan allure of this coveted neighborhood. Contact us to arrange an exclusive viewing and to experience sophisticated urban living in the heart of Chelsea.

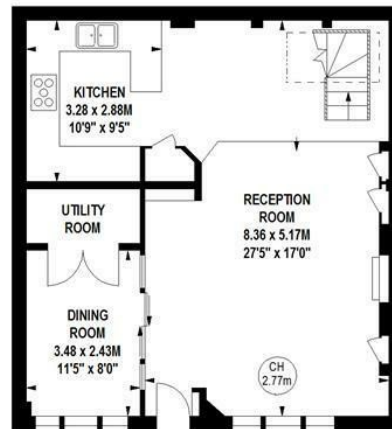


## Henniker Mews, SW3

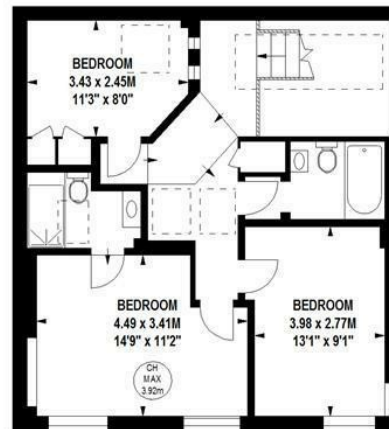
Approximate gross internal area

127.64 sq m / 1374 sq ft

Key :  
CH - Ceiling Height



687 sq ft  
**Ground Floor**



687 sq ft  
**First Floor**



KNIGHTSBRIDGE  
INTERNATIONAL REAL ESTATE

This floor plan is a representation for guidance purposes only, not for valuation.  
Any figure is approximate and must not be relied on as a statement of fact.  
Copyright of Wyatt Dixon Homes







- Freehold
- 3 Bedrooms
- Private Gated Mews
- Off Street Parking



**KNIGHTSBRIDGE**  
INTERNATIONAL REAL ESTATE

5, Harwood Road, London, SW6 4QP

[info@kbire.co.uk](mailto:info@kbire.co.uk) | 02080580052