



KNIGHTSBRIDGE
INTERNATIONAL REAL ESTATE



Phillimore Place, Kensington
London

£8,000 Per week



KNIGHTSBRIDGE
INTERNATIONAL REAL ESTATE



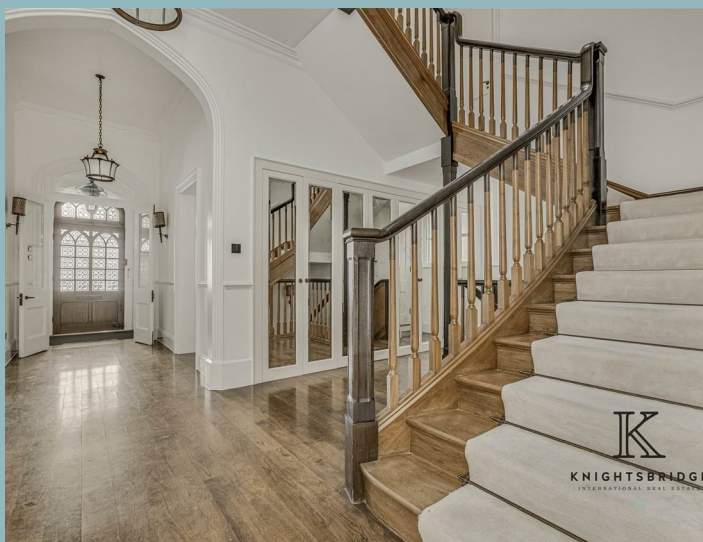
This stunning mid-19th century villa in Kensington beautifully embodies the Tudor Gothic architectural style, preserving the historic charm that defines the area. With nearly 5,800 square feet of living space, this meticulously maintained property offers a harmonious blend of timeless elegance and modern convenience. Located just minutes from Kensington High Street, the villa provides an ideal setting for luxurious family living in one of London's most prestigious neighbourhoods.

Spanning four expansive floors, the villa features seven bedrooms and seven bathrooms, ensuring ample space for every need. The ground floor is perfect for entertaining, with a grand formal reception room complete with a gas fireplace, leading into a spacious kitchen and dining area equipped with a large breakfast bar, Sub-Zero fridge/freezer, and high-end Gaggenau appliances. The first floor hosts the luxurious principal suite, featuring his and hers dressing rooms and a stunning marble ensuite bathroom. The top floor is designed for family life, offering four double bedrooms, three bathrooms, and a convenient second laundry room.

Modern comforts include independently controlled air-conditioning in four bedrooms, ensuring year-round comfort. The lower level offers additional space for relaxation, with a games room, family room, private south-facing paved garden, and separate maid's/nanny's quarters, along with a fully-equipped primary laundry room.

The property is offered to the market unfurnished and is available for immediate occupancy.

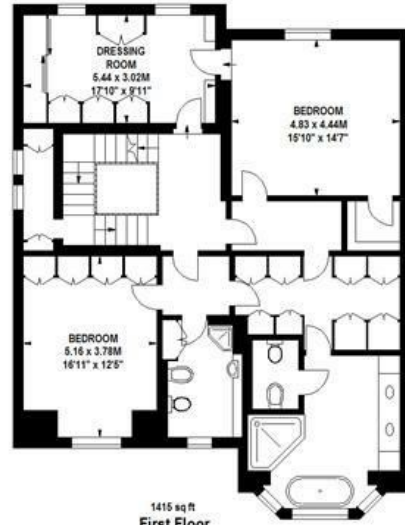
Located in a prime Kensington location, the villa is a short walk from Kensington High Street, with its vibrant array of shops, restaurants, and cafés. The area is well-served by public transport, providing easy access to the rest of London. Nearby, Kensington Gardens and Holland Park offer green spaces for relaxation.



Phillimore Place, W8

Approximate gross internal area

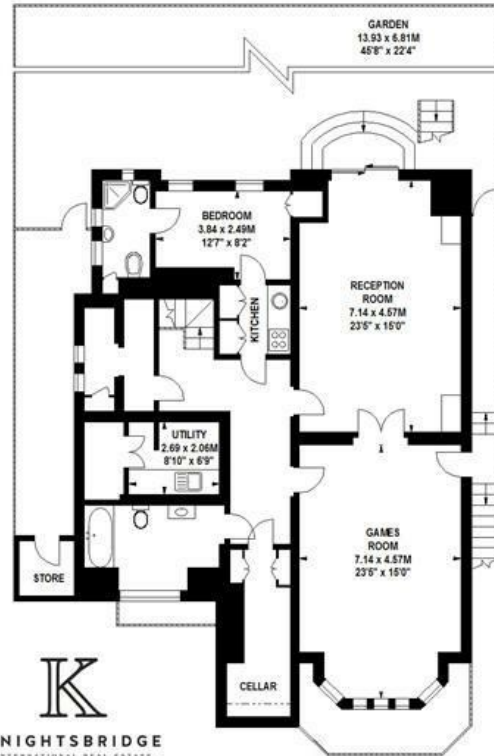
537.24 sq m / 5783 sq ft



1416 sq ft
First Floor



1336 sq ft
Second Floor



1512 sq ft
Lower Ground Floor



1521 sq ft
Raised Ground Floor



This floor plan is a representation for guidance purposes only, not for valuation.
Any figure is approximate and must not be relied on as a statement of fact.
Copyright of Wyatt Dixon Homes





- Historic Tudor Gothic Design
- Nearly 5,800 sq ft of Living Space
- Grand Reception Room with Fireplace
- Luxury Principal Suite with Marble Bathroom
 - Four Double Bedrooms on Top Floor
- High-End Kitchen with Premium Appliances
- Lower Level with Games Room and Garden Access
 - Prime Kensington Location Near High Street

K
KNIGHTSBRIDGE
INTERNATIONAL REAL ESTATE

K

KNIGHTSBRIDGE

INTERNATIONAL REAL ESTATE

139, Munster Road, London, SW6 6DD

info@kbire.co.uk | 02080580052



K
KNIGHTSBRIDGE
INTERNATIONAL REAL ESTATE



K
KNIGHTSBRIDGE
INTERNATIONAL REAL ESTATE