



K

Drayton Gardens, Chelsea
London

KNIGHTSBRIDGE
INTERNATIONAL REAL ESTATE

£3,000 Per week



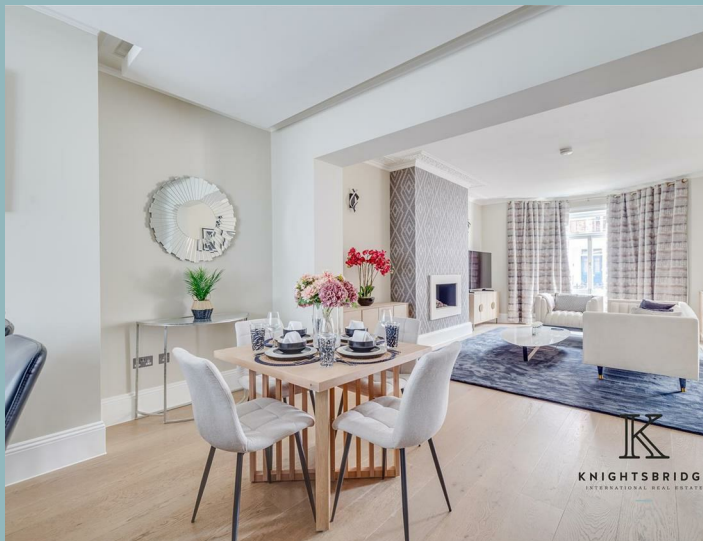
K
KNIGHTSBRIDGE
INTERNATIONAL REAL ESTATE

This charming lateral five-bedroom apartment on the raised ground floor of a sought-after mansion building. Recently refurbished to impeccable standards, it exudes both style and space. This apartment comes furnished and it has a porter service for added convenience.

Beautifully designed with a modern touch, this apartment also benefits from a spacious reception area and versatile study. The adjoining fully fitted kitchen adds modern convenience. A principal bedroom with en-suite, along with three double bedrooms and a single bedroom. A separate family bathroom and second shower room. A private balcony and ample of storage throughout the property.

Drayton Gardens is located between Old Brompton Road and Fulham Road, moments away from a variety of amenities which South Kensington and Chelsea have to offer.

This apartment is available now.



K
KNIGHTSBRIDGE
INTERNATIONAL REAL ESTATE

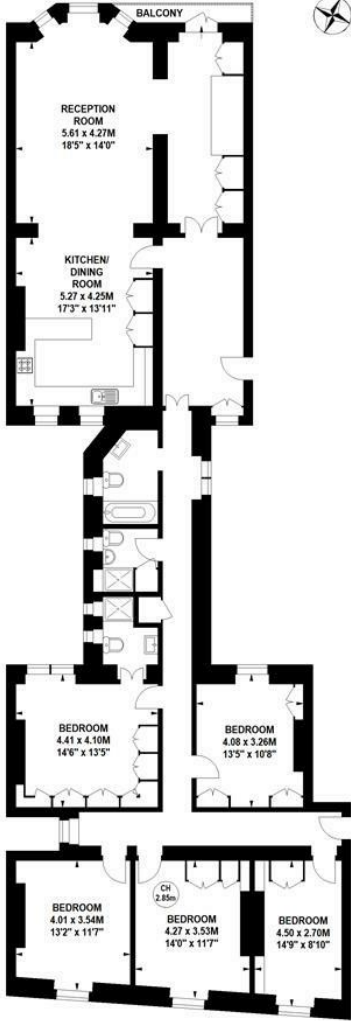


K
KNIGHTSBRIDGE
INTERNATIONAL REAL ESTATE

Drayton Gardens, SW10

Approximate Gross Internal Area
194.07 sq m / 2089 sq ft

Key :
CH - Ceiling Height



Raised Ground Floor

The floor plan is not to scale and measurements and areas shown are approximate and therefore should be used for illustrative purposes only. The plan has been prepared in accordance with the RICS code of Measuring Practice and whilst we have confidence in the information produced, it must not be relied on. If there is any aspect of particular importance, you should carry out or commission your own inspection of the property.



KNIGHTSBRIDGE
INTERNATIONAL REAL ESTATE

- Raised ground floor apartment
 - Five bedrooms
 - Private balcony
 - Newly renovated
 - Porter
 - Fully furnished
 - Three bathrooms

K

KNIGHTSBRIDGE

INTERNATIONAL REAL ESTATE

139, Munster Road, London, SW6 6DD

info@kbire.co.uk | 02080580052



KNIGHTSBRIDGE
INTERNATIONAL REAL ESTATE



KNIGHTSBRIDGE
INTERNATIONAL REAL ESTATE