



BANHAM  
071  
67 144

8

K

KNIGHTSBRIDGE  
INTERNATIONAL REAL ESTATE

K

Henniker Mews, Chelsea  
London

£1,384 Per week

KNIGHTSBRIDGE  
INTERNATIONAL REAL ESTATE





**K**  
KNIGHTSBRIDGE  
INTERNATIONAL REAL ESTATE

Charming three-bedroom mews house within a beautiful gated development and situated in a highly sought after location within close proximity of both the Kings Road and Fulham Road. The unique appeal of the property is accentuated by the rare privilege of off-street parking, elevating both convenience and prestige.

Step inside to a delightful ambiance, where the cleverly designed layout maximizes natural light and fosters an open living experience on the ground floor. This seamless integration of space not only enhances the property's aesthetic but also creates an ideal setting for effortless entertaining and modern living.

To the first floor the property boasts principal bedroom with en-suite bathroom, two further double bedrooms and a family bathroom. Offered to the market on a part furnished basis, this property is available to move into from the end of January.

Henniker Mews, a picturesque cobbled haven, is accessible through two entrances from Callow Street. Positioned with enviable proximity between the renowned King's Road and the trendy Fulham Road, residents can indulge in the myriad offerings of fashionable restaurants, boutiques, and bars that define the cosmopolitan allure of this coveted neighborhood. Contact us to arrange an exclusive viewing and to experience sophisticated urban living in the heart of Chelsea.



**K**  
KNIGHTSBRIDGE  
INTERNATIONAL REAL ESTATE



**K**  
KNIGHTSBRIDGE  
INTERNATIONAL REAL ESTATE

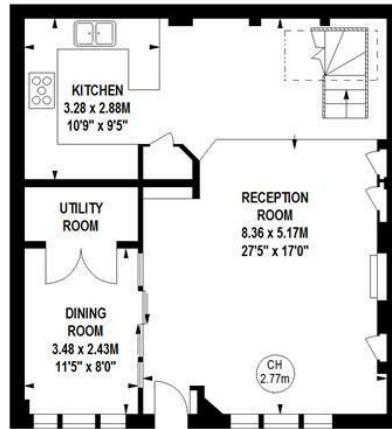


**K**  
KNIGHTSBRIDGE  
INTERNATIONAL REAL ESTATE

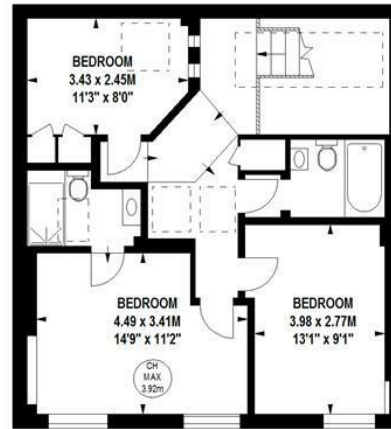
# Henniker Mews, SW3

Approximate gross internal area  
127.64 sq m / 1374 sq ft

Key :  
CH - Ceiling Height



687 sq ft  
**Ground Floor**



687 sq ft  
**First Floor**



**KNIGHTSBRIDGE**  
INTERNATIONAL REAL ESTATE

This floor plan is a representation for guidance purposes only, not for valuation.  
Any figure is approximate and must not be relied on as a statement of fact.  
Copyright of Wyatt Dixon Homes





- Stunning Gated Mews House
- Three Double Bedrooms
- Highly Sought After Location
- Open Plan Kitchen And Dining
- Seperate Playroom Or Study
- En-suite To Prinicpal Bedroom
- Offered To The Market Part Furnished
- Available To Move Into From The End Of January



K

**KNIGHTSBRIDGE**

INTERNATIONAL REAL ESTATE

139, Munster Road, London, SW6 6DD

[info@kbire.co.uk](mailto:info@kbire.co.uk) | 02080580052