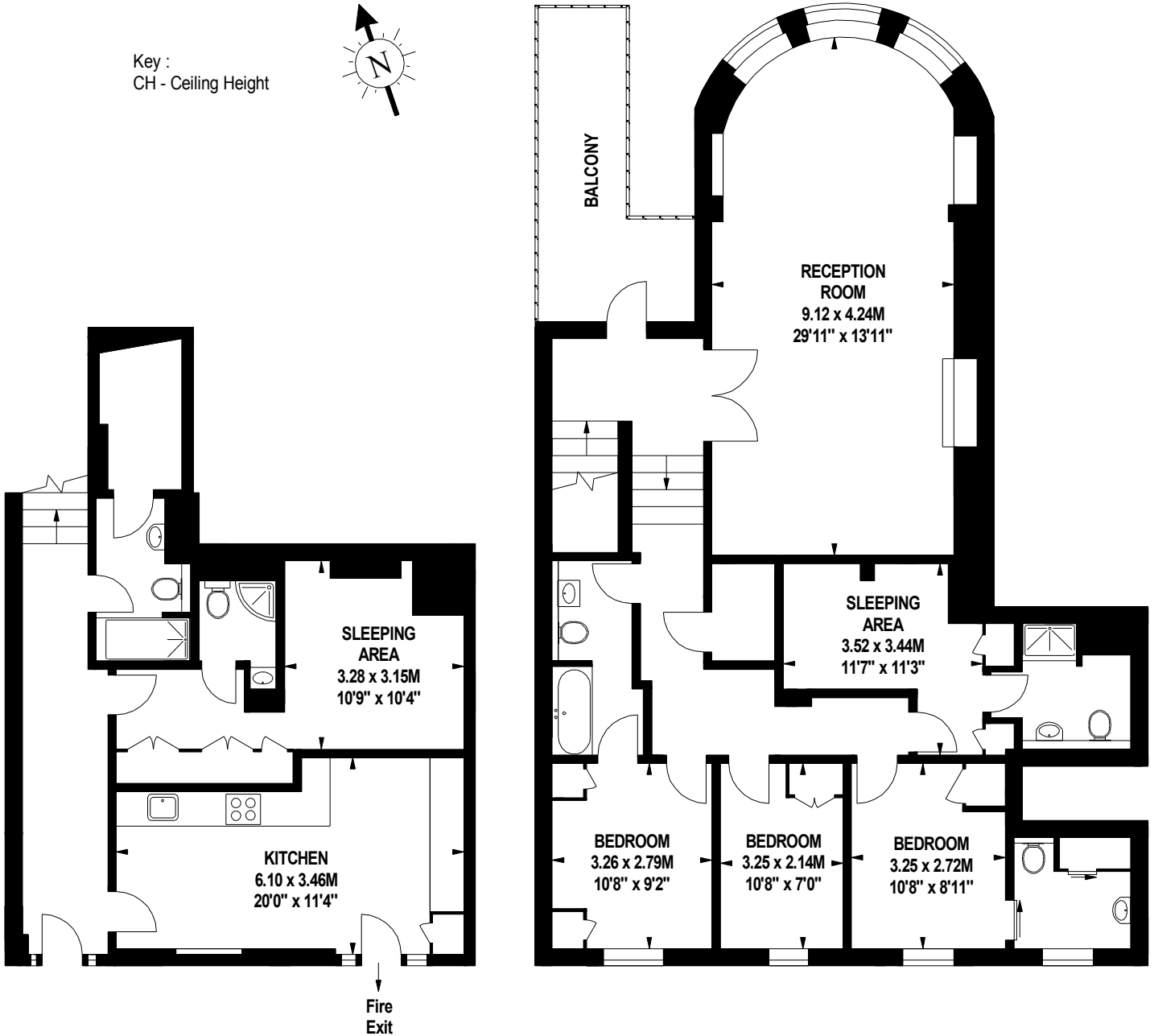


York Terrace West, NW11

Approximate gross internal area

170.89 sq m / 1840 sq ft

Key :
CH - Ceiling Height



651 sq ft
Ground Floor

1189 sq ft
First Floor

The floor plan is not to scale and measurements and areas shown are approximate and therefore should be used for illustrative purposes only. The plan has been prepared in accordance with the RICS code of Measuring Practice and whilst we have confidence in the information produced, it must not be relied on.

If there is any aspect of particular importance, you should carry out or commission your own inspection of the property.

Copyright of Outline.