



K

KNIGHTSBRIDGE  
INTERNATIONAL REAL ESTATE

Chelsea Harbour, London

London

£1,900 Per week



3



3



1



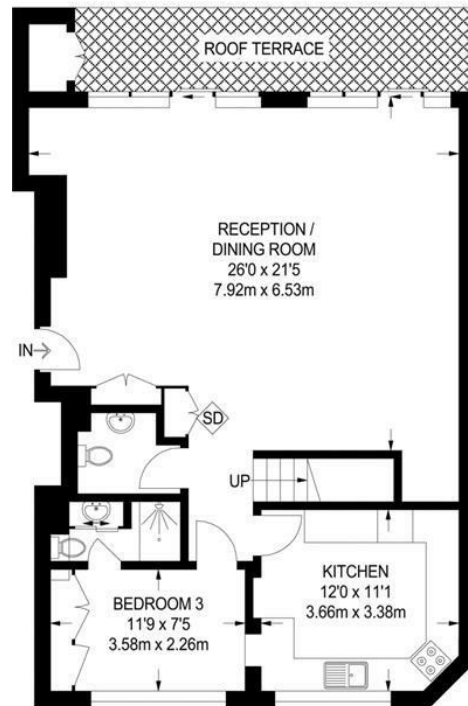




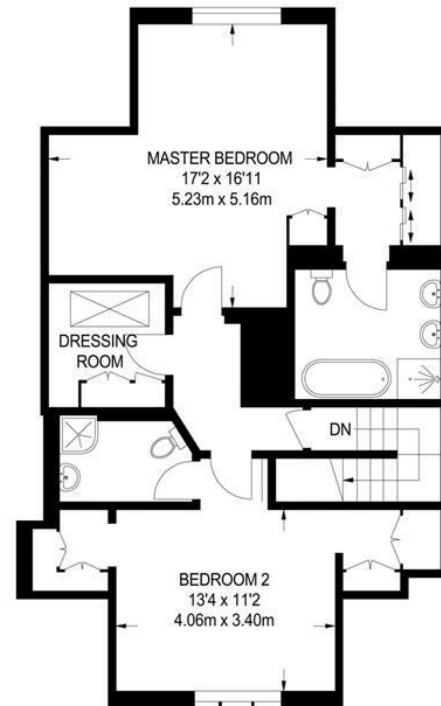
Located in the Heart of Chelsea Harbour this luxury split level penthouse benefits from a spacious living room, private terrace, modern kitchen, air-conditioning, three double bedrooms with en suite bathrooms and additional single room/dressing room.

The Quadrangle building benefits from porter service, 24hr CCTV and riverside location. Just moments away from Imperial Wharf Overground and various local shops and restaurants.





**FIFTH FLOOR**  
1128 SQ FT / 104.8 SQ M



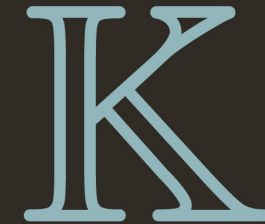
**SIXTH FLOOR**  
820 SQ FT / 76.2 SQ M

**APPROXIMATE GROSS INTERNAL AREA**  
1948 SQ FT / 181.0 SQ M





- Penthouse Apartment
- Three bedrooms with en suite bathrooms
  - Porter service
- Underground private parking
  - Private Terrace
- Additional room for staff / dressing room
  - Direct Lift to Penthouse
  - Air conditioning
  - Ample Storage
  - Large reception



**KNIGHTSBRIDGE**

INTERNATIONAL REAL ESTATE

139, Munster Road, London, SW6 6DD

info@kbire.co.uk | 02080580052

