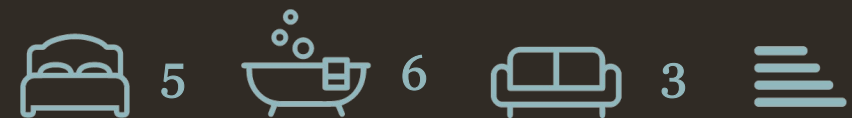




Imperial Crescent, Fulham
London

£12,000 Per month



KNIGHTSBRIDGE
INTERNATIONAL REAL ESTATE



Rarely available to the market and one of only twelve houses on this very desirable road within the beautiful landscaped gardens of Imperial Wharf and in a secure gated development. This is a perfect home for a family offering ample living accommodation throughout with easy access into the city and a wealth of amenities surrounding the property.

This townhouse is arranged over 4400 square foot with a luxurious open plan kitchen dining area with bi-folding doors which open up to the rear garden, leading to a separate studio which is being used as a gym at the moment (Gym equipment included) which also has a fully fitted kitchen and bathroom completely self contained. A spacious bedroom or nanny flat on the lower ground floor with utility area and shower room leading to the integral double garage with separate entrance on this level to the front. On the first floor the property offers a living room and second reception which could also be used as a bedroom. A superb master bedroom suite with plentiful storage and huge en-suite and dressing room with his and hers sink. On the third floor further bedrooms perfect for children and a further two bathrooms.

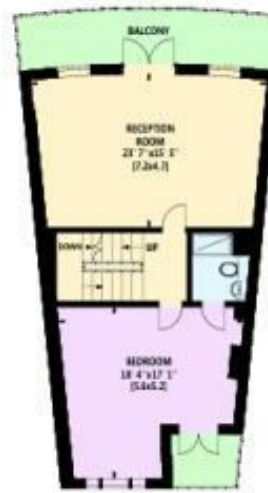
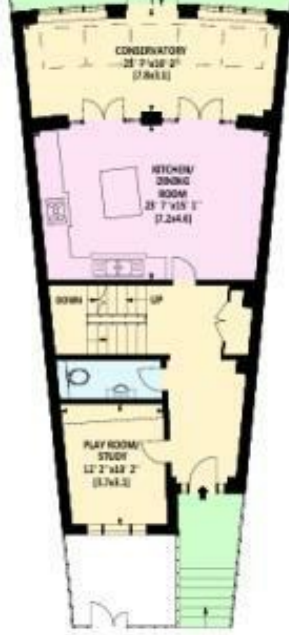
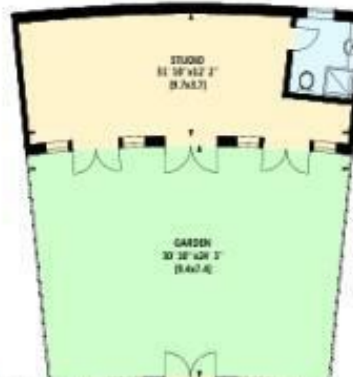
Imperial Crescent is located within the prestigious and award-winning Imperial Wharf development. Separated from the main buildings by Imperial Park, which has been landscaped to include a pond and mature trees and shrubs, Imperial Crescent is discreetly tucked away behind secure CCTV-monitored gates on a private road, to which only Imperial Crescent residents have access.

The renowned Harbour Club Chelsea is located directly outside the gates to Imperial Crescent. With its facilities ranging from fitness rooms, swimming pools and tennis courts to a health spa & clinic.

This property is available to move into from the 1st July 2024 and is offered to the market on a part furnished basis.



Gross Internal Area: 351 Sq. metres
 4209 Sq. feet
 Including Studio of 37 Sq. metres
 388 Sq. feet





- One of only twelve houses on a coveted road in Imperial Wharf's gated community
- Gated access and CCTV monitoring ensure privacy and peace of mind
 - 4400 sq ft spread over multiple floors, perfect for families
- Luxurious open-plan kitchen with bi-folding doors to the garden
- Self-contained gym studio with included equipment
- Easy access to the city and abundant nearby amenities
- Expansive en-suite, dressing room, and his-and-hers sinks
- Access to Harbour Club Chelsea's top-tier facilities just outside the gates



KNIGHTSBRIDGE

INTERNATIONAL REAL ESTATE

139, Munster Road, London, SW6 6DD

info@kbire.co.uk | 02080580052

